



# Woodland Dunes Nature Center *Dunesletter*

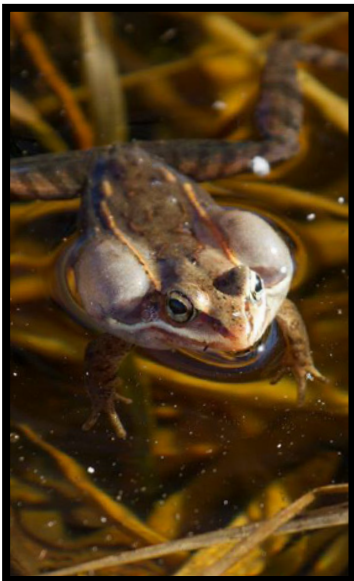
Summer 2016 & Volume 164

## From the Director

We are very excited to announce that we have added a new employee to the Woodland Dunes family. Nancy Nabak, Communications & Development Coordinator, is now in charge of the marketing and fundraising. Nancy is very energetic, has a background in communications and non-profit organizations, and has a deep interest in nature. She is President of the Bay Area Bird Club in Green Bay, Green Bay's Bird City coordinator, part of the State's chimney swift project, a member of the Board of Directors of the Wisconsin Society for Ornithology, and her favorite bird is the eastern towhee. Nancy successfully coordinated this year's Dash at the Dunes, and has some new fundraising events planned.



Contents	
Page 1.....	Director's Note
Page 2 - 4.....	Summer Events
Page 5.....	Thank you
Page 6.....	Education
Page 7.....	Land Management & Ways of Giving
Page 8.....	Membership



In alignment with our strategic plan, our nature preserve is becoming bigger and better. Volunteers helped remove a significant amount of invasive shrubs along Columbus St. and on the Bugler preserve, and are now helping plant several dozen species of native trees and shrubs, more than 1,400 in all. In addition to our preserve, we are working along the Ice Age Trail on Aurora Medical Center's property. Their forest has excellent potential to become a stopover habitat for migrating songbirds. Plans are being developed for the restoration of Forget Me Not Creek, which will include analysis of the creek physically, chemically, and biologically. This is in addition to modification of the lower stream and removal of a culvert on our property.



We are also working with Dr. Jon and Annette Henry to improve habitat on 60 acres of their property adjacent to our preserve. We continue to manage land in Zander Park and asked to help with establishing songbird habitat on the contained disposal facility at Manitowoc Harbor. We've applied for a grant to help establish a canoe and kayak trail on the East and West Twin Rivers, which includes improving our boardwalk and developing points of interest signs.

Improvements around our headquarters continue. Cattail Trail is under renovation, which will result in a lower, wider, and more level trail. We have a new roof, electrical wiring, and other structural improvements to our barn, donated by Jack and Laurel Alyea. Along with that, we will have a new observatory or "sky shed" to house the telescope that was donated by Jack Alyea. This will enhance our series of star parties that will take place on a regular basis.

Interesting programs are always on our docket, including some new activities like Tunes at the Dunes, and expanded summer camps. Thanks to WAICU and the Hooper Foundation, we will be joined this summer by the three wonderful interns who helped us last year. Be sure to welcome Breanna, Alek, and Erica back when you see them!

**-Jim Knickelbine, Executive Director**

# Spring Events



## Contact Information:

Woodland Dunes Nature Center  
3000 Hawthorne Ave  
Two Rivers, WI 54241

Phone: (920) 793-4007  
Website: [www.woodlanddunes.org](http://www.woodlanddunes.org)

Nature Center Hours:  
Monday- Friday: 9am-4pm  
Saturdays (April-October): 9am-12pm

## Yoga at the Dunes Spring/Summer Series

Wednesdays 9:00-10:00am

Session 1: 5/25-6/29

Session 2: 7/13-8/17

Session 3: 8/24-9/28

\$50 per 6-week session

Children 4-18yrs: \$25 per 6-week session

\*A 10% discount offered when you purchase 2 or more sessions at once!

\$10 drop-in rate for any class

Join certified yoga instructors Jennifer Jelenic and Robin Blair for a gentle yoga session surrounded by the beauty of the outdoors. No prior yoga experience necessary. Be prepared to practice outside. Bring your yoga mat, water and dress for movement/weather (limited supply of mats on site). Class will take place inside the Nature Center in inclement weather. For more information, contact Jennifer at 920-242-4811/ [jjelenic03@yahoo.com](mailto:jjelenic03@yahoo.com) or Robin at 843-697-3983/ [twinmommy1@gmail.com](mailto:twinmommy1@gmail.com). To pre-register, call Woodland Dunes at 793-4007 or email Jess at [jessicaj@woodlanddunes.org](mailto:jessicaj@woodlanddunes.org)

---

## Friday Morning Bird Walk

Fridays, June - August  
8:15-9:30am

Donations appreciated

You are invited to join Woodland Dunes staff on a weekly bird hike and help document the birds in the preserve. Meet at the Nature Center and bring your binoculars. This is a weather dependent program.

## Summer Star Party Series

Saturday, June 4th 9:00-11:00pm

Saturday, July 9th 9:00-11:00pm

Saturday, August 6th 8:30-10:30pm

Join astronomers Al and Ben and view night sky constellations, the moon and other celestial objects through telescopes. Bring a lawn chair and your own telescope or binoculars if you wish. Weather and sky conditions permitting. Program takes place outside the Nature Center.

*Sponsored by Next Era Point Beach Nuclear Plant.*

---

## Kids' Nature Club

9:00am - guided nature walk

10:00am - guided nature activity

\$2 per participating child

All families with children and teens are invited to the Kid's Nature Club! Enjoy a guided nature walk followed by a guided nature activity. Please bring weather appropriate clothing, binoculars if you have them, a water bottle and comfortable shoes/boots. Kids' Nature Club is for all ages, especially young children. Children/teens must be accompanied by an adult. RSVP to Margaret Pauwels at [obytml@yahoo.com](mailto:obytml@yahoo.com) or 732-1562, by the Monday before the program.

June 9th:

Explore textures and create a work of art using nature.

July 14th:

Learn about the monarch life cycle and how you can rear monarchs.

August 11th:

Discover the parts of a flower through dissection.

---

## Volunteer Appreciation Picnic

Tuesday, June 14th

Noon

Woodland Dunes volunteers are invited to a picnic lunch made by the staff. Sit back, relax and let the staff thank you for everything you make possible at Woodland Dunes. All volunteers invited. Please RSVP by June 10th. Held at the Nature Center.

# Spring Events



## **Birding the Marsh**

Fridays June 24th, July 15th & August 19th  
9:00-10:30am

Members: \$10  
Non-members: \$15

Enjoy a guided tour of the marsh to look for birds and other wildlife. Reservation and payment required by the Wednesday of the week of the tour. Limited spots available. *Sponsored by the Friends of the Twin Rivers.*

---

## **Birding with Bernie**

Saturdays, June 25th & August 27th  
9:00am-Noon

Donations appreciated. Relax and enjoy bird watching in Chickadee Landing inside the Nature Center. Join seasoned birder Bernie Brouchoud and identify and observe the birds as they come to the feeders.

---

## **Pig Roast and Live Music**

Saturday, June 25th  
5:00-8:00pm

Summer evenings are magical at the Dunes so let's celebrate with a Pig Roast and live music by Wild Irish Gerry! Grab your friends and hang out at one of the neatest nature preserves in the state! Eat freshly roasted pork, listen to great tunes, and let the summer evening carry you away.

Ticket price: \$15 per person / \$10 for children 12 years and under. **Limited seating so make your reservation by June 3 to guarantee your spot!**

Lodging near Woodland Dunes: Lighthouse Inn on the Lake 1-800-228-6416. Ask for the Woodland Dunes Pig Roast block for discount. Reserve early for guaranteed lower rate! *Sponsored by Red Arrow*

---

## **Little Wings Family Program: International Mud Day!**

Wednesday, June 29th  
4:00pm-5:30pm

Explore soil, make mud pies and enjoy mud stamping. Nature activities best suited for ages 4 to 7, but all ages welcome. Registration appreciated by June 27th. Be prepared to get muddy. An extra change of clothes and plastic bags are highly recommended. In the event of poor weather, there will be an indoor activity.

*Sponsored by Cellcom.*

## **Nature Time Tuesdays**

1:30-3:00pm  
Tuesdays, July 5th - August 9th

Donations appreciated  
Families are invited to drop in anytime between 1:30-3:00 and participate in a nature-themed activity.  
*Sponsored by Cellcom.*

---

## **Tunes at the Dunes**

Wednesdays, July 6th-August 3rd  
5:30-7:30pm

Donations appreciated. Wind down in the middle of the week at Woodland Dunes! Bring blankets or lawn chairs and enjoy live, family-friendly music outside the Nature Center. Children's activities will be available and the Nature Center will be open. In the event of poor weather, music will be inside the Nature Center. *Sponsored by the Green Bay Packers Foundation.*

---

## **Little Wings Family Program: Spiders!**

Friday, July 8th  
9:00-10:00am

Learn all about our eight-legged friends through guided activities with our staff. After, explore the Little Wings Nature Play Area, walk the trails or have a picnic. Nature activities best suited for ages 4 to 7, but all ages welcome. Registration appreciated by July 6th. In the event of poor weather, there will be an indoor activity available. *Sponsored by Cellcom.*

---

## **East Twin River Paddle**

Saturday, July 16th  
9:00-11:00am

Join the Friends of the Twin Rivers for a leisurely paddle on the lower East Twin River. Bring your own canoe/kayak or reserve a Hobie kayak (paddle with your feet) when you register. Registration required by Monday, June 11th. Light snacks provided after.  
*Sponsored by the Friends of the Twin Rivers.*

# Spring Events



## Three Summer Herbs for Health, Nourishment and Fun!

Monday, July 18th  
6:00-8:00pm

Members: \$15  
Non-members: \$20

Summer is such a glorious time to learn about the healing plants that grow around us. Join herbalist Linda Conroy for this stroll about the property to look deeply at 3 prevalent plants that can promote health and healing. Harvesting and preparation techniques will be discussed and other herbs will be mentioned as time permits. **Registration and payment required by Friday, July 15th.**

## Tour of the New Wetland at Woodland Dunes

Tuesday, August 2nd  
9:00-10:30am

Donations appreciated  
Last year, Stantec Consulting Services, Inc. designed a wetland restoration project at Woodland Dunes funded by Wisconsin Public Service. Join Jon Gumtow, Senior Scientist and Project Manager with Stantec and Woodland Dunes Director, Jim Knickelbine to learn about the project. A short indoor program will be followed by a tour of the wetland. Registration required by Friday, July 29th. *Sponsored by Next Era Point Beach*

## Owl Fest

Saturday, July 30th  
9:00-Noon

Members: \$15 family, \$5 individual  
Non-Members: \$20 family, \$8 individual



Join us for an exciting morning learning about Wisconsin owls! Enjoy kids activities, nature walks and a kids' owl hooting contest. Meet live owls and raptors at presentations by Wildlife of Wisconsin. This event is great for families, but all ages are welcome. Event takes place at the Nature Center.

## \*New Summer Camp\*

### Kids' Eye View of Wildlife Rehabilitation with Wildlife of Wisconsin

Tuesday, August 16th  
9:00-11:30am

Price: \$25  
Ages 8-14 years

Have you ever wondered what it is like to be a wildlife rehabilitator? Now is your chance to get a taste of what this job is all about! After a short program about what a typical day is like, learn skills at practice stations such as wing wrapping, reading x-rays and more (skills not conducted on live animals). Meet a live animal and hike in their native habitats. Registration required by August 6th. Register online at [www.woodlanddunes.org](http://www.woodlanddunes.org), email Jess at [jessicaj@woodlanddunes.org](mailto:jessicaj@woodlanddunes.org) or call 793-4007. This camp is offered in partnership with Wildlife of Wisconsin.

**Registration is open for all summer camps! This year we expanded our camps to include a wider range of children and topics. For more information and to register, visit [www.woodlanddunes.org](http://www.woodlanddunes.org) or contact Jess at [jessicaj@woodlanddunes.org](mailto:jessicaj@woodlanddunes.org).**

# Thank You



## Education Support

Thank you to all Teacher Naturalists (TN) who helped with spring programs! We could not offer these programs without you!

## Memorials

*In memory of Tom Herzog*

Rev. Nancy Hooper Horvath

*In memory of Shawn McMonigal*

Rev. Nancy Hooper Horvath

*In memory of Joann Mullins*

Amy Mullins

*In memory of Ralph Bennett*

Don & Helen Massey

*In memory of David Schaap*

Jeffrey & Janet Kohn

*In memory of Timothy J. Dalton*

Patricia M. Savage

## Donations

Ronald Ratajczak

The Cawley Company

Bill Pauwels

Prompt Printing

Tonia Gibeault

Jean Olson

Ice Age Park & Trail Foundation -

Manitowoc Chapter

Rosemarie Bugs

Darlene Waterstreet

Starfish Graphics

David & Mary Ozarowicz

Bill Krcma

The Vacuum Shop

Robin Callan

## Grants

Norcross Wildlife Foundation, Inc.

The Wisconsin Society for

Ornithology, Inc.

Hooper Foundation

NEXtera Energy Point Beach LLC

## New Guarantors

Patricia Augustine

## New Members

Andy & Laurie Paulin

The Tjossem Family

Diane Lupke & Ron Kysiak

Greg & Judy Goodchild

Corporate - Ironwood Plastics, Inc.

Dennis Tienor

Kate Gadd

Jackie Sullivan

John & Becky Hoffmann

Mike Emmenegger

## Matching Funds

Ameriprise Financial, Inc.

Lakefield Telephone Company/Nsight

Teleservices

IBM

Dominion

US Bank

## Volunteer Spotlight Gerry Sisel



### How long have you been volunteering?

Hard to believe but I joined in 1978 - 38 years of involvement (behind the scenes).

### Why did you decide to volunteer?

Without volunteers, Woodland Dunes wouldn't be where it is today. I'm proud to be a volunteer.

### What do you most enjoy about being involved with Woodland Dunes?

I enjoy working with the old and new staff and the volunteers on projects that are rewarding and helpful to the public.

### What are some of your favorite hobbies and pastimes?

Sitting or working in the environment of nature. Biking, hunting, and ice fishing.

## Save the Date!

### Spaghetti Dinner

Monday, January 16, 2017

Mark your calendars for our traditional spaghetti dinner and be watching for details.

### Tropical Blast!

Saturday, February 25, 2017

We're bringing the tropics here so you don't have to go south! Location: Silver Lake College Atrium. It's going to be one heck of a fundraiser! Get it on your calendar and get ready for a tropical blast!

## Volunteer Gardeners Needed

If you are interested in helping with gardening or lawn care please contact us! We are in great need of help with our butterfly garden and wildflower berm, and with general mowing and landscape maintenance. Any help will be appreciated!



## Tunes at the Dunes

This summer, we are excited to offer a live music series sponsored by the Green Bay Packers Foundation. The community is invited to bring blankets or lawn chairs and enjoy live, family-friendly music outside the Nature Center. Music will begin at 5:30PM, children's activities will be set up and the Nature Center will also be open until 7:30pm. In the event of poor weather, the music will be moved inside the Nature Center. We hope you will join us!

7/6 – Randy Peterson  
*A family concert*

7/13 – Becky Markvart & Greg Pagel  
*Jazz, blues standard, pop and country*

7/20 – Rändi Fay  
*Lyrical jazz, standards and blues*

7/27 – CRS Band  
*Oldies, classic country and more!*

8/3 – Great Lakes Ramblers  
*Folk*



---

## Dash at the Dunes 2016



Sunshine, temperatures in the 50s, and 235 walkers and runners were the perfect ingredients for an amazing 5th Annual Dash at the Dunes fundraiser. We could not have pulled it off without dozens of volunteers and our amazing sponsors and donors: Aurora Medical Center, Browns of Two Rivers, KI, Lakeside Foods, Starfish Graphics, SeedsNBeans, Festival Foods, Natural Ovens, Kohl's, Noodles & Company, Dick's Sporting Goods, and Tom & Betsy Kocourek. Your continued support of this event helps us provide quality, nature-based education programs year round.

Congratulations to our Overall Winners: Meredith Duchaine of Sheyboygan with a time of 23:57.5 and Robert Finke of Fridley, MN with a time of 17:52.7. To the rest of our winners and participants, thank you, thank you, thank you!

Lock down the date for next year! Saturday, April 22, 2017, let's do it again! For more information or to become a sponsor, please contact Nancy at 920-793-4007.

# Land Management



It is going to be another busy, exciting summer at Woodland Dunes for land management. With the help of grants from the Wisconsin Department of Administration, the U.S. Fish and Wildlife Service, the U.S. Department of Agriculture (USDA), and the Natural Resources Foundation of Wisconsin, we are removing invasive buckthorn trees, honeysuckle and barberry shrubs. We will also be planting over 1,000 larger trees and shrubs within the preserve and neighboring properties, which is part of the larger Restore the Shore effort. Our team will continue caring for the approximately 3,000 trees we planted in the last two years, which continue to grow.

In partnership with the USDA, Pheasants Forever, and Bill Arhndt (a neighboring landowner), we are restoring and enhancing over 200 acres of pollinator habitat. We are in our third year of controlling non-native Phragmites along the East and West Twin Rivers. We are also mapping and controlling Japanese and common barberry within the preserve with a grant from the DNR's private forest program. Woodland Dunes is also involved in restoration efforts at the Manitowoc Confined Disposal Facility and Forget Me Not Creek (part of which runs through our property).

We are seeking volunteers to come out for workdays to assist with invasive species control and/or native species restoration planting. Through a grant from LNRP, follow up treatment will be conducted on Japanese knotweed near the Shoto Dam and Manitowoc Yacht Club, as well as Phragmites on the Manitowoc River, and at the Manitowoc County Recycling Center. For more information on land management volunteer opportunities please contact Jeni at 920-793-4007 or jenniferp@woodlanddunes.org.

**-Jennifer Powell, Land Management Coordinator**



## Ways of Giving

*Woodland Dunes is a nonprofit organization and provides educational programs for youth and adults while maintaining 1300 acres of land for the community to enjoy free of charge.*

*Please consider making a donation.*

**I wish to support Woodland Dunes with the following general donation:**

\$25\_\_\_ \$50\_\_\_ \$100\_\_\_ \$200\_\_\_ Other\_\_\_  
Name (please print)\_\_\_\_\_ Phone\_\_\_\_\_  
Address\_\_\_\_\_  
City\_\_\_\_\_ State\_\_\_\_\_ Zip\_\_\_\_\_

Please make checks payable to Woodland Dunes and return this form with your donation:  
Woodland Dunes, P.O. Box 486, Two Rivers, WI 54241

**Wish List:**

\*Updated Computer Programs: Adobe Indesign & Photoshop for MAC

**Additional Project Contribution:**

- \$\_\_\_ Educational Displays
- \$\_\_\_ Cattail Trail Boardwalk
- \$\_\_\_ Education Programs
- \$\_\_\_ Land Restoration Projects
- \$\_\_\_ Edowment Fund



**Woodland Dunes Nature Center**

P.O. Box 486

Two Rivers, WI 54241-0486

**Woodland Dunes**  
Nature Center & Preserve

# Woodland Dunes Nature Center

## Headquarters and Nature Shop

Hwy. 310 West of Two Rivers

### Hours

Monday-Friday: 9am-4pm  
Saturday: 9am-12pm (April-October)

### Contact

Phone: (920) 793-4007  
Email: nature@woodlanddunes.org  
Website: www.woodlanddunes.org  
Facebook: Look up Woodland Dunes in  
Two Rivers, WI and like our page!

### Staff

*Executive Director*  
Jim Knickelbine  
*Assistant Director/Education Coordinator*  
Jess Johnsrud  
*Communications & Development Coordinator*  
Nancy Nabak  
*Land Management Coordinator*  
Jennifer Powell  
*Administrative Assistant*  
Tina Kvitck

## Board of Directors

*Chairman*

Tom Kocourek

*Vice Chairman*

Bruce Robinson

*Treasurer*

Troy Christiansen

*Secretary*

Lyn Brouchoud

## Board Members

Helen Bleser  
Ed Brey  
Robert Gahl  
Michaeleen Golay  
Jon Henry  
Susan Knorr  
Ellen Lewellen  
Dolly McNulty  
Charles Sontag  
John Woodcock  
Lucy Zeldenrust

## Become a member or give a gift membership!

Name \_\_\_\_\_  
Address \_\_\_\_\_  
City \_\_\_\_\_  
State \_\_\_\_\_ Zip \_\_\_\_\_  
Phone \_\_\_\_\_  
Email \_\_\_\_\_

- \_\_\_\_\_ \$25 Individual
- \_\_\_\_\_ \$35 Family
- \_\_\_\_\_ \$50 Patron
- \_\_\_\_\_ \$100 Contributor

### Guarantors

- \_\_\_\_\_ \$250 Conservator
- \_\_\_\_\_ \$500 Benefactor
- \_\_\_\_\_ \$1,000 Steward
- \_\_\_\_\_ \$5,000 Guardian

Please send this form and your tax-deductable membership to Woodland Dunes!