

## CONTENTS

- 2 Chamber Honors  
Spaghetti Dinner  
Bird Breakfast
- 3 Trip Advisor Review  
DASH at the DUNES  
Candlelight Night
- 4 Upcoming Events
- 6 Land Management  
SPOT the CAUSE  
Maple Syrup
- 7 Thank You

## FROM THE DIRECTOR

**Ready, Set, Spring!** After the winter we've had, we should be ready for mud and slush and all those good things that make fresh green foliage seem even more wonderful. It's good to freshen things up, even within our organization. You've probably already noticed a change in our appearance. After some discussion involving our staff and Board, we've decided to update our logo, not that we don't love our saw-whet owl, but we want to visually encompass other important aspects about Woodland Dunes - the forest, ridges and swales, a wetland, and our connection to Lake Michigan. The logo also displays the majesty of a soaring osprey, which has become an integral part of our summers at the Nature Center.

We're also welcoming three new members to our Board of Directors: Dr. Rebecca Ablter, biology instructor at UW Manitowoc, Bill Hoeltke, Vice President at Country Visions Cooperative, and Mark McLaughlin, recently retired but formerly with Felician Village and Holy Family Memorial. We are sincerely grateful for their willingness to help further our mission.

We are also grateful to be remembered in the estate of longtime friend, Grace Peppard. Grace bequeathed a portion of her estate to our general endowment fund. (We actually have two endowment funds, one general and one for education). We hope that more friends will contribute to these funds, ensuring the legacy of our organization.

We have many projects on deck for the coming year: several habitat restorations, the exciting development of a canoe/kayak trail on the Twin Rivers in cooperation with the City, and much more. As we map out these priorities, we are increasingly aware of the vulnerability of the land, and the effort it will take to protect its species. It's becoming obvious that we face two great threats in the future- a warming climate that

---

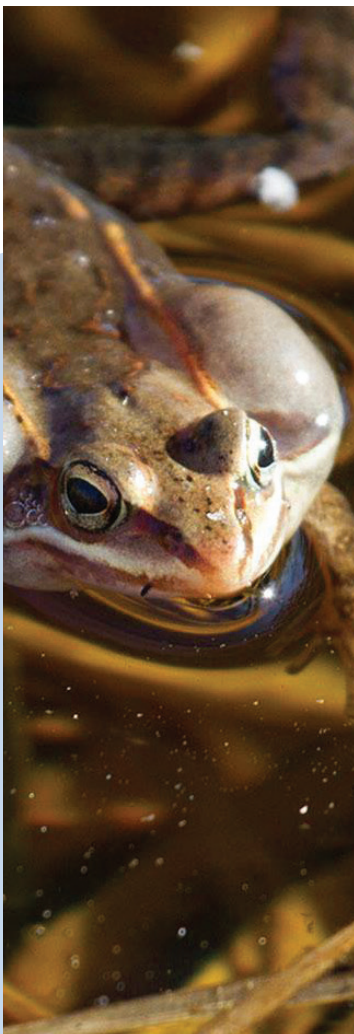
**“ Onward into spring, with all of its joys and challenges. Let's see how much good we can bring to our little corner of the world. ”**

---

threatens the composition of plants and animals in our preserve, and the invasive emerald ash borer and the damage it does. According to the DNR, our ridges and swales are at highest risk of disruption of all Great Lakes coastal wetland types as a result of climate change, and because green ash trees dominate large areas of our forest, it's only a matter of time before we see the ash borer here. Dealing with these two threats, in addition to an overabundance of deer and invasive plant species, will challenge our capacity and resources but the work must be done.

Onward into spring, with all of its joys and challenges. Let's see how much good we can bring to our little corner of the world.

*~ Jim Knickelbine, Executive Director*





**the Chamber**  
Manitowoc County  
2016 Education Impact Award Winner



## Johnsrud Receives Honor from Chamber

Our very own Education Coordinator, Jessica Johnsrud, received the Manitowoc County Chamber's Education Impact Award on Tuesday, Feb. 7th at their 100th Annual Dinner & Meeting. The award states, "In recognition of an exceptionally dedicated educator."

Jess graduated from UW-Stevens Point where she majored in Biology, but soon moved into the field of Environmental Education. She has excelled immensely as our Education Coordinator. She's responsible for providing meaningful, science-based education to six thousand school children and adults each year using curricula that meets current State and national standards. She manages several of the Center's largest events, successfully working with dozens of volunteers. Her field trip programs consistently receive the highest rating on teacher evaluations, she is, as one elementary

school student described her, "a joy to be around." Jess exemplifies the qualities that result in effective education in a non-traditional setting, and she represents the spirit of Woodland Dunes to the fullest.

*Congratulations, Jess!*

## Spaghetti Dinner Rescheduled

The Spaghetti Dinner has been rescheduled to

**Monday, March 20th from 4:00-7:00 pm.**

Location: Two Rivers Family Restaurant. \$8 per plate. Baked goods available for purchase. Enjoy a delicious spaghetti dinner and support Woodland Dunes Nature Center at the same time! All proceeds support environmental education programs. No reservations required.



## Woodland Dunes Wish List

- 25 padded and stackable chairs
- Printer(s)
- Bird seed
- New laptop computer



## Bird Breakfast & Migration Celebration

**Saturday, May 20th | 8:00 a.m. – 11:00 a.m**

Celebrating spring and the return of many of our migratory songbirds! Guided bird hikes, kids games and activities on deck. Be watching our website for more details.

## Trip Advisor Review from July 2016

*"Delightful experienced"*

★★★★★ Reviewed July 26, 2016



tripadvisor

We happened to join an "every-Friday" guided bird walk with the Director, a few interns and local birders, and other novices. This was a great experience --having them id birds from sound as well as help id those we saw; explanation of the various habitats we covered as well as description of other trails we could do on our own. They made you feel welcome and we saw at least two new birds we had not seen before. There is a great board walk through various types of habitat, so it is comfortable and safe to go alone as well. Everyone at the Center was pleasant and helpful. This would be a favorite spot is we lived in the area.

Visited July 2016



## 5K Trail Run/Walk Fundraiser

**Saturday, April 22nd  
10:00am**

Check-in: 8:45am-9:45am

Dash with us to help support our beautiful habitat and children's nature-based education programs!

<p><b>Location:</b> Aurora Medical Center Atrium 5000 Memorial Drive Two Rivers</p>	 <p><b>Be an EARLY BIRD!</b></p> <p>Register by April 1st to be in the Early Bird Drawing!</p>	<p><b>Register by:</b>  <b>April 7th</b> - \$25 per adult \$10 per child (12 and under) Guaranteed T-Shirt  <b>April 8th - April 14th</b> \$30 per adult \$10 per child (12 and under) Guaranteed T-Shirt Pre-registration closed April 15-20th  <b>April 21 &amp; Race Day</b> \$35 per adult \$10 per child (12 and under) T-Shirt first come, first serve</p>
---	---	--

The course: This course is a beautiful 5k trail run/walk that begins in the parking lot behind Aurora Medical Center and finishes at our Nature Center.

Finish line celebration: Snacks and drinks will be provided to all participants after the race with an award ceremony to follow. All children 12 and under will receive a wooden medallion for participation.

Bus shuttle: A bus will shuttle participants back to Aurora Hospital between 11:15 a.m.-12:15 p.m.

New! Early pick up & pre-registration: Friday, April 21 from 4:00-6:00 p.m. at the Aurora Atrium!

To register: [www.woodlanddunes.org/dash-at-the-dunes-registration](http://www.woodlanddunes.org/dash-at-the-dunes-registration)

For sponsorship opportunities, please email Nancy – [nancyn@woodlanddunes.org](mailto:nancyn@woodlanddunes.org) or call 920-793-4007.

## Candlelight night a great success!

About 120 happy people (with a nice mix of adults and children) attended Candlelight Night on Feb.4th. We were blessed with great weather and outstanding volunteer help.

The luminaries on Willow Trail, complemented by solar lights on Cattail Trail, set the mood for a fun winter's night. Many participants enjoyed our campfires and refreshments by the fire while Jeff & Ben Schmidt played indoors for those who wanted to warm up and socialize. Thank you to our wonderful event sponsors who helped make this possible, Cellcom and Thrivent Financial.

## Fun Fact:

Woodland Dunes will be featured in the Spring edition of the Wisconsin Natural Resources Magazine which has an estimated readership of **350,000** people.

# UPCOMING EVENTS

## Mixed Level Flow Yoga with RYT Jennifer Jelenic

Wednesdays in March, April and May  
6:00-7:15PM

Drop-in fee: \$12 or purchase  
a class pass \$50/5 classes

This 'yoga flow' class will help build strength, flexibility and stamina. Each class begins with a meditation and gentle warm up for the spine and muscle body to deepen your mind-body connection. Class appropriate for all levels, with modifications demonstrated so every "body" has the opportunity to experience yoga safely. Dress for movement and comfort. Props are on site, however feel free to bring your mat. Contact Jennifer at 920-242-4811 or visit: [www.yogafern.com](http://www.yogafern.com) for more information.

## Raising a Wild Child Preschool Program

Thursdays March 9th, April 13th & May 11th  
9:00-10:30AM

Members: \$2/child | Non-members: \$3/child

Experience the wonders of nature with your 2 - 5 year old through nature hikes, play and guided activities. Help your child notice the natural world and ignite their curiosity! Registration required by the Monday before each program. Children must be accompanied by an adult. Dress for the weather.

## SNOGA at the Dunes

Saturday, March 11th  
9:30-11:00AM

\$15/person or \$25/couple if registered by 3/8  
\$20/person or \$30/couple, after 3/8

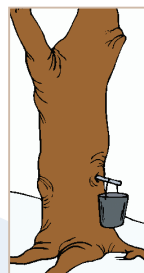
Join certified yoga instructor Jennifer Jelenic for a morning guided snowshoe walk. Snow + Shoe + Yoga = Snoga. We will incorporate specific yoga poses for flexibility, strength and endurance and walking meditation techniques to center your mind. Warm beverages and light snacks after. If there is no snow, we will hike. Fee (includes snowshoes). Space is limited. Make-up date offered on Saturday, March 18th, 9:30-11:00am if the program is canceled due to poor weather. All ages and abilities welcome.

## Nature's Garden

Saturday, March 11th  
1:00-2:30PM

\*Program held in the Behringer Room inside the J.E. Hamilton Community House at 1710 W. Park St. in Two Rivers

Join nature and garden author/radio host Rob Zimmer for a look at great ways to create wildlife habitat right at home, no matter how large or small your property. Explore excellent ways to get closer to birds, butterflies, bees and more, right in your own backyard. Materials and other resources will be available for home gardeners. Registration required by Thursday, March 9th. Co-sponsored by Next Era Point Beach Nuclear Plant and the Friends of the Twin Rivers.



## Maple Syrup Program for Families

Saturday, March 18th  
9:00-10:30AM

Members: \$4/person  
or \$10/family

Non-Members: \$5/person or \$15/family

Bring the kids to discover why March is the sweetest time of year! Learn about the syrup making process and taste real maple syrup on popcorn. Dress for the weather and be prepared to walk a short distance to the program site. Activities best suited for kids age 5 and up, but younger siblings are welcome. Space is limited, registration required by March 15th.

## Birding with Bernie

Saturdays, April 1st & May 6th  
9:00AM-Noon

Donations Appreciated

Relax and enjoy bird watching in Chickadee Landing - inside the Nature Center. Join seasoned birder Bernie Brouchoud and identify and observe the birds as they come to the feeders. Stop in anytime between 9:00am and Noon.

## Midwest Annual Crane Count

Saturday, April 8th | 5:30AM

Only a few sandhill cranes were left in Wisconsin in the 1930's, but due to protection, their population now exceeds 10,000. Each year volunteers visit designated sites in Manitowoc County to count courting sandhills. If you would like to help, or join a seasoned crane counter to learn the technique, contact Jim at [nature@woodlanddunes.org](mailto:nature@woodlanddunes.org) for more information.

## Timberdoodle Hike

Friday, April 14th  
7:30-8:30PM Timberdoodle Program

Members: \$4/person or \$10/family  
Non-members: \$5/person or \$15/family

Search for the sky dancing American woodcock and witness its elaborate courtship displays during the guided hike. Registration is required by Monday, April 10th. Weather dependent.



## Star Party

Friday, April 14th  
8:30-10:00 PM

Scope the night skies with local astronomers, Al and Ben. Bring a lawn

chair and your own telescope if you wish. Weather and sky conditions permitting. Program takes place outside the Nature Center. Sponsored by Next Era Point Beach Nuclear Plant.

## Bird Hike for Homeschool Families

Thursday, May 4th  
9:00-10:30AM

Members: \$3/person or \$10/family  
Non-members: \$4/person or \$15/family

Homeschool families are invited to learn about birds. After a short introductory activity, enjoy a guided hike to look for our feathered friends. Bring binoculars if you have them and wear shoes that can get a little muddy. Children must be accompanied by an adult. Registration is required by Monday, May 1st.

## Star Party

Saturday, May 6th  
9:00-10:30PM

Join astronomers Al and Ben and view night sky constellations, the moon and other celestial objects through the big telescope in the Sky Shed! Bring a lawn chair and your own telescope or binoculars if you wish. Weather and sky conditions permitting. Program takes place outside the Nature Center. Sponsored by Next Era Point Beach Nuclear Plant.

## Bird Breakfast & Migration Celebration

Saturday, May 20th  
8:00-11:00AM

Adults \$6, Children \$5;  
Kids under 4, free  
(includes breakfast)



You are invited to a fun celebration of spring and the return of many of our migratory songbirds. Enjoy a ham and pancake breakfast, guided bird and nature hikes, and go Birding with Bernie in Chickadee Landing inside the Nature Center. Kids' games and activities will be ongoing throughout the morning. This event is fun for everyone!

## 2017 Summer Camp Registration is Now Open!

Summer is just around the corner and that means it's time to register your kids for summer camps! Woodland Dunes offers fun, educational summer camps that connect your child to the outdoors. Enrollment numbers are limited to ensure campers receive a high quality experience and allow them time to explore the preserve, make new friends and learn about the natural world. All supplies for projects, a snack and plenty of outdoor time are included. We are offering some new camps and bringing back some of the best (with a few new surprises) from last summer.

You can register your child online or stop in at the Nature Center. More information can be found on our website, or contact Jess at: [jessicaj@woodlanddunes.org](mailto:jessicaj@woodlanddunes.org)

## Little Wings Summer Camp

(Ages 4, 5 & 6 not completed kindergarten)

Monday, June 26 - Friday, June 30  
9:00AM-Noon

Members: \$95 | Non-Members: \$115

Every day is an adventure for Little Wings campers! Explore the outdoors and learn about things with wings! Each day will include a snack, crafts, free-play in the Little Wings nature play area and lots of outdoor exploration and activities! Families are invited to join their campers for a celebration on Friday at 11:00am.

## Pond Pals Summer Camp

(Ages 6-10)

Wednesday, June 14  
12:30-3:00PM

Members: \$20 | Non-members: \$30

Be a scientist as you dive into the amazing world of ponds! Find out what lives just beneath the surface by using dip nets to capture small insects, tadpoles and more! After collecting, bring the wildlife back to the lab for identification and study. Be sure to wear clothes that can get a little wet and dirty.

## Frogs, Toads & Salamanders Summer Camp

(Ages 4-7)

Wednesday, July 19  
1:00-3:00PM

Members: \$12 | Non-members: \$20

Meet the amazing amphibians of Woodland Dunes! Learn about their lifecycle and even what they sound like. Try your luck catching frogs and tadpoles in the ponds by the Nature Center. This is an interactive camp for young learners!

# SUMMER CAMP

## Nature Artists Summer Camp

(Ages 8-12)

Wednesday, July 26  
12:00-3:00PM

Members: \$20 | Non-members: \$30

Let creativity be your guide as you gather inspiration from the outdoors and make fabulous works of art to take home. This will be a creative camp, using nature as the inspiration and source of beautiful artwork.

## Taking Flight Bird Summer Camp

(Ages 9-12)

Thursday, August 3  
9:00AM-Noon

Members: \$20 | Non-members: \$30

Calling all bird enthusiasts! Learn how to use binoculars, where to look for birds and other essential birding skills. Enjoy a guided bird hike in the preserve and watch how birds are banded for research (weather permitting).

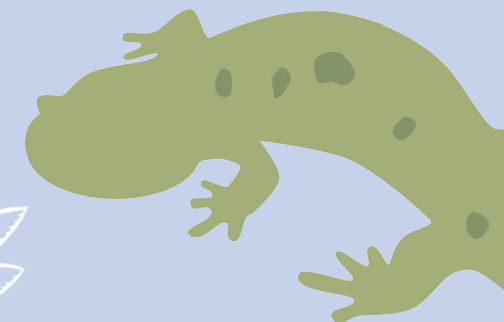
## Woodland Dunes Princess Summer Camp

(Ages 4-6)

Wednesday, August 9  
12:30-3:00PM

Members: \$20 | Non-members: \$30

Do princesses wear hiking boots? They do when exploring their natural kingdom at Woodland Dunes! Princesses will enjoy teatime, make nature crowns, search for frogs and more! Wear princess attire that can get dirty and hiking/tennis shoes, of course!





## Land Management

We've spent much of the winter taking advantage of the mild weather and finishing invasive species removal projects from 2016. We're also focusing on spring-coordinating tree, shrub, wildflower, and native grass orders as we are replacing invasive species with natives, and diversifying our forests and prairies.

Our preserve faces many threats. The emerald ash borer now surrounds our area, and green ash trees dominate large portions of our forest. A recent study by the DNR listed the Great Lakes ridges and swales community as the only coastal wetland habitat at high risk of degradation due to warming (climate change); our preserve is one of the few remnants of that habitat on western Lake Michigan. An overpopulation of deer threatens our native trees, shrubs, and wildflowers, preventing natural forest regeneration and degrading pollinator prairies into grass-dominated communities. Disturbed habitat also provides an opportunity for invasive species encroachment from surrounding areas.

Now, more than ever, we need focused land management. We are planting bigger, native trees and shrubs to help prevent deer browse, increasing their survival rate and preventing our ash-dominated forest from becoming an invasive-dominated forest. We're also planting native prairies for pollinators, providing habitat for species such as monarch butterflies and possibly rusty patch bumblebees. Work is being done on restoring wetlands and sensitive native wildflowers, which historically grew in our preserve. We have an active deer management program and have applied to partner with the DNR's Deer Management Assistance Program to get a better understanding of our deer population and its relationship to our ecosystems.

We can always use your help. These are large undertakings and aren't possible without our staff, interns, and volunteers working together. If you're interested in helping with land management projects, please contact Jeni at 920-793-4007 or [jenniferp@woodlanddunes.org](mailto:jenniferp@woodlanddunes.org).

## SUGARSHACK Maple Syrup Sugar Shack Coming!

Thanks to Gary Drohman, generous donor of a maple syrup evaporator, we are now able to take our syrup-making to a new level. With this gift, we are faced with the exciting opportunity to build a proper "sugar shack" to house our new equipment. Fortunately, we have a slab that can be used as a foundation at our Field Station. We also have volunteers eager and ready to construct the building.

The cost of the materials is modest and we already have several people willing to donate some of the necessary funds, but to really make it go we're seeking additional contributions. Would you like to be a part of this project? Your support is a great way to honor or remember someone who loved the outdoors and will help us educate people about the sustainable use of forest resources. Please contact us if you are interested in making a donation toward this sweet project!

~ Jim Knickelbine, Executive Director



# THANK YOU

### Memorials/Honorarials

*In memory of James Anderson*  
Darold & Suzanne Wieting  
Bruce & Laura Rowe  
James & Sharon Rath  
Jay & Nancy Orvis

*In memory of Robert & Lois Bush*  
Jeffrey & Julie Rathmanner

*In memory of Mrs. Gerald Nelson*  
Helen Bleser

*In memory of Grace Peppard*  
Helen Bleser

*In memory of Lee Brey*  
Charles & Marilyn Sontag  
Kyla Philbrook  
Gail Zinkel  
Jim & Sue Luther  
Don & Jeanie Miller  
Gerald & Nancy Perreault  
Mary Jacobi  
James & Ann Perreault  
Mary Schultz  
Friends & Family of Lee  
Michael & Elizabeth Gigl  
Rosemarie Bugs  
John & Sharon Brey

*In memory of Russell Shambeau*  
Helen Bleser

*In honor of Jessica Johnsrud*  
Darlene Waterstreet

### Land Management/ Invasive Species Management Donations

Brenda Weyers  
Shana Shoblaska  
Roger & Darlene Meissner  
Douglas Manz  
Rosemary Bodart  
Nick & Lisa Novachek  
Dale Schultz  
Chris Rusch

### Land Restoration Projects

Janet Krivacek & Randy Gage

### Donations

Bristol-Myers Squibb –  
Corporate Match  
Wisconsin Public Service  
Foundation – Corporate Match  
Cellcom – Givin' A Little Back  
Robin Blair  
Anonymous  
Millborn Seeds  
Gary Kohls  
Craig Kohls  
Darlene Waterstreet  
Christopher & Kristin Scheuer –  
Butterfly Garden  
James F. Fluck –  
Little Wings Play Area  
Helen Massey  
Thrivent Financial  
Holschbach Excavating  
Bob Turnbull  
Lee Lodl – Aldo Leopold bench  
Mathew Olker  
Water's Edge Artists  
The Ice Age Trail Alliance –  
Lakeshore Chapter  
Lean on the Lakeshore

### Donations Bird Atlas

Tom & Betsy Kocourek  
Lucy Zeldenrust  
Charles & Marilyn Sontag

### Cattail Trail Boardwalk Repair

Dominion Foundation  
Janet Krivacek & Randy Gage  
Jon & Annette Henry  
Marion H. Giesecke

### Grants

Hooper Foundation –  
Internship Grant

### New Guarantors

Dale Sharkey  
Mark & Jennifer McLaughlin

### Fund Drive Donors

Anthony Scherer  
Patricia D'Aoust  
Janice Tetzlaff  
Paul & Carol Steinbrecher  
Geoffrey & Carla Liban  
Bill & Traci Hoeltke  
Vernon Childs

### New Members

Sue Mueller  
Mike & Gail Koralewsky  
Pastor Daniel & Jen Sims  
& Family  
Nick & Andrea Port  
John Durbrow  
Nathan Schultz  
Mark & Elizabeth Bittner  
Jeanette Pekarske  
Mike & Chris Beck



**SPOT  
the CAUSE**

**SPOT THE CAUSE** is an opportunity to support a local not-for-profit organization through your purchase of selected merchandise at Country Visions Cooperative. Look for the RED SPOT in-store to see the item and offer for the current cause.

The current cause is:

**Woodland Dunes Nature Center and Preserve**  
Go to [www.woodlanddunes.org](http://www.woodlanddunes.org) to learn more about Woodland Dunes



**Black Oil  
SUNFLOWER SEED**  
40 lb. bag

**sale**  
**\$14.49**

Purchase this product  
March 1-31, 2017 and  
\$1.00 for each bag sold  
will go to  
Woodland Dunes  
Nature Center

Sale price valid March 1-31, 2017. Reg. \$14.99

Country  
VISIONS  
the  
**Country Store**

De Pere • Mishicot • Reedsville • Valders  
920/336-6449 920/755-2231 920/754-4322 920/775-9281

This promotion is being offered by Country Visions Cooperative and can be terminated without notice at anytime.



# WOODLAND DUNES

## NATURE CENTER & PRESERVE

PO Box 486 | Two Rivers, WI 54241-0486

## WOODLAND DUNES NATURE CENTER

*Become a member or give a gift membership!*

### Headquarters & Nature Shop

Hwy 310 West of Two Rivers

#### Hours

Monday - Friday: 9 am - 4 pm  
Saturday: 9 am - 12 pm (April - October)

#### Contact

Phone: (920) 793-4007

Email: [nature@woodlanddunes.org](mailto:nature@woodlanddunes.org)

Website: [www.woodlanddunes.org](http://www.woodlanddunes.org)

Facebook: Look up Woodland Dunes in Two Rivers, WI and like our page!

#### Staff

<i>Executive Director</i>	Jim Knickelbine
<i>Assistant Director/ Education Coordinator</i>	Jess Johnsrud
<i>Communications &amp; Development Coordinator</i>	Nancy Nabak
<i>Land Management Coordinator</i>	Jennifer Klein
<i>Administrative Assistant</i>	Tina Kvitek

### Board of Directors

*Chairman*  
Tom Kocourek

*Vice Chairman*  
Bruce Robinson

*Treasurer*  
Troy Christiansen

*Secretary*  
Lyn Brouchoud

### Board Members

Rebecca Abler  
Helen Bleser  
Ed Brey

Robert Gahl  
Jon Henry

Bill Hoeltke  
Susan Knorr

Ellen Lewellen  
Mark McLaughlin

Dolly McNulty  
Charles Sontag  
John Woodcock  
Lucy Zeldenrust

Name \_\_\_\_\_  
Address \_\_\_\_\_  
City \_\_\_\_\_  
State \_\_\_\_\_ Zip \_\_\_\_\_  
Phone \_\_\_\_\_  
Email \_\_\_\_\_

- |                                |             |
|--------------------------------|-------------|
| <input type="checkbox"/> \$25  | Individual  |
| <input type="checkbox"/> \$35  | Family      |
| <input type="checkbox"/> \$50  | Patron      |
| <input type="checkbox"/> \$100 | Contributor |

#### Guarantors

- |                                  |             |
|----------------------------------|-------------|
| <input type="checkbox"/> \$250   | Conservator |
| <input type="checkbox"/> \$500   | Benefactor  |
| <input type="checkbox"/> \$1,000 | Steward     |
| <input type="checkbox"/> \$5,000 | Guardian    |

Please send this form and your tax-deductable membership to Woodland Dunes!