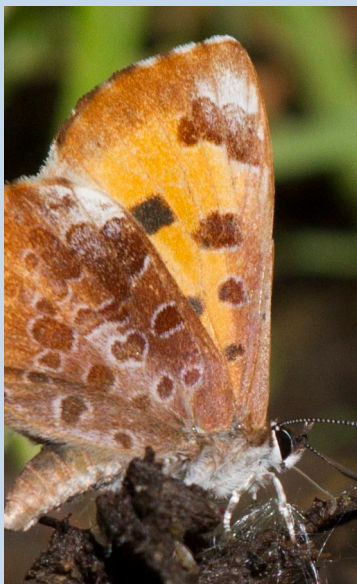


## CONTENTS

- 2 Owl Fest  
Planned Giving
- 3 Henry's Dog Treats  
Volunteers Needed  
Save The Date
- 4 Upcoming Events
- 6 Land Management  
Thank You
- 7 Intern Reports

Photography by Nancy Nabak  
unless other wise noted.



## FROM THE DIRECTOR

We look forward to the fall with its refreshing weather and wonderful changes in wildlife. Our preserve changes with the seasons, and no two strolls on the trails are the same. We are so fortunate to witness the flow of life over time and across the landscape. The opportunity to explore and learn about the millions of facets of this incredible place never cease. For example, this summer's ample rainfall and high water made it a challenge to keep some of the trails maintained, but it also kept our newly planted trees and shrubs well watered.

**“The opportunity to explore and learn about the millions of facets of this incredible place never cease.”**

Over the summer, we planted trees and shrubs within our main preserve and also at the containment facility in Manitowoc. We also seeded quite a few acres in both our main and the Bugler preserves. Now, we and the pollinators, wait patiently for the wildflowers to grow. Work has started on the design of the future wetland of the Henry Preserve on Woodland Drive with construction taking place next year. Our Forget-Me-Not Creek restoration will begin soon, as well as additional work at the Center and along the lakeshore, thanks to a grant from US Fish and Wildlife.

In addition to our land management duties, our summer programs and camps were very well attended, which kept our staff and interns busy. It's a great joy to see so many children visiting and excitedly learning about wildlife. Each summer we are blessed with more and new young faces here.

We also worked with many groups from local high schools including Two Rivers and Denmark

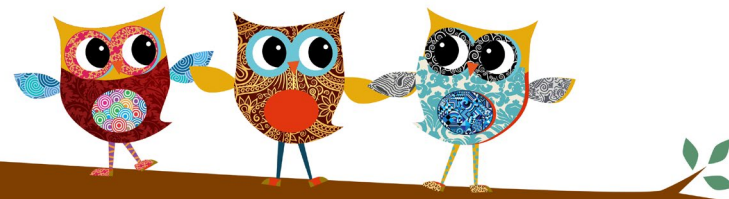
to organizations like Thrivent Financial and the Two Rivers Rotary Club. A big thanks goes to our longtime friends from Grace Congregational Church, who both rebuilt our boardwalk and also gathered here for Sunday worship. Our Education Program and our Dorothy Star Bee and Butterfly Garden will both be improving thanks to support from the Pivot Rock Fund and Merrie and Greg Star. Once again, we are grateful for the major support received from members of the Alyea Family. We are grateful and humbled by the support from you all.

That being said, we now face a new and perhaps unprecedented challenge to our ecosystem, posed by the invasive emerald ash borer. This tiny and deceptively beautiful iridescent green beetle has been confirmed in the City of Manitowoc. It is almost certain to devastate areas of the preserve dominated by green ash. A few years ago, we began planting other native tree species appropriate to our area to mitigate the impending effects of the borer, but we need to do far more. The loss of the ash tree canopy will create even more opportunities for alien plants to invade, and managing the preserve will become a much greater challenge. We are in the process of seeking funding to help us, and we ask for your help as well. Our property committee, staff, and volunteers will be doing all we can to continue to provide a home for as many species of native wildlife as possible here. All is not lost, but a lot of work and funding will be needed.

~ Jim Knickelbine, Executive Director



Photo by Mike Reese



## OWL FEST WAS A HOOT!

Thank you to everyone hoo-hoo attended Owl Fest! The weather was wonderful, attendance was outstanding, and everyone enjoyed spending time outdoors. Our guests met live owls and other birds of prey, and also participated in face painting, owl pellet dissections, and guided nature walks.

Thanks to our wonderful sponsors: **American Transmission Company, The Rahr-West Art Museum and Red Arrow.**



**Can't wait for next year!**

## Planned Giving Means I Love You Forever

Has Woodland Dunes been important in your life? Do you and your family have an interest in seeing our habitat managed in perpetuity? Would you like to make a lasting and permanent difference?

Planned Giving is a meaningful way to ensure that Woodland Dunes will be able to take care of its precious land and provide strong nature-based programs to the children and families of our community.

What we can accomplish with your lasting contribution:

- Ensure that another 100,000 children (and more) will actively learn about nature through our impactful education programs on the preserve.
- Continue the fight against harmful invasive species, which threaten our globally significant land every day.
- Help both our common and rare wildlife species thrive through the maintenance and protection of beneficial native plants, shrubs, and trees on our 1,300 acre preserve.

### Opportunities

#### Memorial Gifts and Bequests

Individuals may leave a bequest to Woodland Dunes Nature Center. A bequest is a gift made through a donor's will and is completely free from federal estate tax. If you have already named Woodland Dunes Nature Center in your plans, we would like to acknowledge your meaningful gift. Please contact us.

#### Endowment

Make a gift that will support Woodland Dunes and its mission in perpetuity by contributing to the endowment fund. A percentage of the interest earned each year will support the nature center and its work, keeping the principle intact. Contributing to the endowment fund is an act of great vision, as you will leave a legacy to ensure Woodland Dunes serves the community for future generations.

#### Donating Stocks and Bonds

Individuals may avoid paying capital gains taxes by donating stocks and bonds to Woodland Dunes Nature Center. Donors are entitled to a charitable income tax reduction equal to the full market value of the stock.

#### Life Income Agreement

A life income agreement allows you to make a substantial capital gift to Woodland Dunes Nature Center, while retaining your income for your lifetime and/or that of additional beneficiaries.

For more information regarding any of the opportunities outlined above, please contact our Executive Director, Jim Knickelbine at: [nature@woodlanddunes.org](mailto:nature@woodlanddunes.org) or by phone: (920) 793-4007.

You will be among the many compassionate friends who have a long-term vision of keeping Woodland Dunes an important and special place.

## Henry's Handcrafted Dog Treats



Woodland Dunes is now selling all natural dog treats in the gift shop. They have ingredients such as oats, honey, bananas, peanuts and pumpkin! A portion of the sales comes back directly to the Dunes so make a purchase next time you're in and treat your dog and us at the same time! Great for gifts, too!

## Volunteers needed to answer the phone and greet guests!



Do you enjoy meeting new people? Can you answer the phone and take messages if needed? If so, we would love you on our "Desk Jockey" team. As we grow, so does our need to greet our guests in person and by phone. If you can give 3 hours of time either during the morning or afternoon to keep us running smoothly, we want your talents! Please contact Nancy at [nancyn@woodlanddunes.org](mailto:nancyn@woodlanddunes.org).

## Coming soon!

More wildflowers for our pollinators! Pollinators are vital to our well being, so it's imperative that we care and provide for them. According to the USDA (US Dept. of Agriculture), 1 out of every 3 bites of food we eat exists because of animal pollinators like bees, butterflies and moths, birds and bats, beetles and other insects.



## Did you know?

According to UW-Madison, honey drives an industry which creates and maintains essential employment in the state and throughout the country. If 80% of the bees were gone, \$4.8 billion would be lost in the state of Wisconsin.

## SAVE the DATE for Tropical Blast 2018



Set aside Saturday, February 24, 2018 for the Second Annual Tropical Blast Fundraiser to benefit nature-based programs at Woodland Dunes!

Enjoy a night in the tropics at Silver Lake College with a delicious Caribbean menu, live steel drums, tropical drinks, a lively auction and more!

We sold out early last year so make sure you get it on your calendar and join us!

Sponsorships are still available. For more information, contact Nancy at [nancyn@woodlanddunes.org](mailto:nancyn@woodlanddunes.org).

Photo by Lynn Rennert



## Testimonials ~ From 2017 ...

"Barb and I had a blast at your Blast last night. What a fun, huge event. The food was great, very fancy, which was a nice touch."

~ Randy J., Madison WI

"I just wanted to tell you that the fundraiser we attended at Silver Lake College was so much fun. We had a wonderful time, and there were so many people. Great food and music."

~ Donna L., Manitowoc

# UPCOMING EVENTS



## Yoga at the Dunes

Wednesdays, September 6th- October 4th  
9:00-10:00am

Back by popular demand, join registered yoga instructor Jennifer Jelenic for our third annual Yoga at the Dunes! Participate in yoga practice (beginner-advanced) set in the natural beauty of the outdoors. Class meets inside the Nature



Center during inclement weather. Bring yoga mat, water and dress for movement/weather. Limited supply of mats on site. Children welcome. Contact Jennifer at [yogafern108@gmail.com](mailto:yogafern108@gmail.com) with questions. *Pre-registration recommended, minimum of 5 registered participants to run each session.*

\$50 per 5-week session  
\$10 drop-in

## Raising a Wild Child Preschool Program

Thursdays September 14th,  
October 12th & November 9th  
9:00-10:30am

Experience the wonders of nature with your 2-5 year old through nature hikes, play, and guided activities. Help your child notice the natural world and ignite their curiosity! *Registration required by the Monday before each program.* Children must be accompanied by an adult. Dress for the weather.

Members: \$2/child  
Non-members: \$3/child



## Fall Star Party Series

Saturday, September 16th 8:30-10:00pm  
Saturday, October 14th 7:30-9:30pm  
Saturday, November 11th 6:30-8:30pm

View night sky constellations with astronomers Al and Ben, along with the moon and other celestial objects through our big telescope in the Sky Shed. Bring a lawn chair and your own telescope or binoculars if you wish. Weather and sky conditions permitting. If cloudy conditions, all Star Parties will take place the following Saturday at the same time. Watch Facebook and the website for changes. Program takes place outside the Nature Center. *Sponsored by Next Era Point Beach Nuclear Plant*



## All Fishes Great and Small

Monday, September 18th  
5:30-7:30pm

*Rain date Wednesday, September 20th*

Salmon, trout, and bass might be the target of anglers, but under the surface there are many more fish species. Learn about the ecology and habitat of the East Twin River at Mishicot and help sample the small fishes that are present by using the seine net. No experience needed! Some waders will be available, but bring your own if you have them. Program takes place at the Mishicot Village Park on Hwy. 147, or meet at Woodland Dunes at 5:15pm to caravan to the site. Best for kids ages 9+. *Sponsored by Next Era Point Beach Nuclear Plant.*

## Yoga Hikes at the Dunes

Saturdays September 23rd & October 21st,  
9:30-11:15am  
Full Moon Yoga Hike Friday, November 3rd,  
5:15-7:00pm

Watch autumn evolve at the Dunes! Join certified yoga instructor Jennifer Jelenic for nature inspired yoga-trail hikes through Woodland Dunes with 3 dates to choose from in early, mid and late fall. Enjoy a quiet, meditative walk through the trails, pausing periodically to practice sequenced, standing yoga poses designed around the beauty of the natural space. No experience necessary, wear clothes appropriate for the weather and movement. Limit 25. All ages welcome. Yoga and guided meditation inside the nature center in case of inclement weather.

\$15/single or \$25/couple if registered and paid by Thursday prior to event.

Walk in: \$20/single or \$30/couple  
*if space is available.*

## Bat Monitoring Demonstration

Monday, October 2nd  
6:45-7:45pm  
*\*Rain date, Tuesday, October 3rd*

Learn how Woodland Dunes is monitoring bats using new surveying equipment made possible through the Wisconsin Citizen-based Monitoring Partnership Program. Join Jess on a walk and see how the equipment detects echolocation calls and immediately identifies the species of bat. *Registration required by Friday, September 29th.*



## Enchanted Forest

Saturday, October 7th  
5:00-8:30pm

Journey along a candlelit trail and meet some of Mother Nature's favorite (costumed) animals. This is an outdoor, self-guided hike with surprises around every turn! Enjoy warm refreshments inside and games and activities outside. This is an educational evening, not a scary one. Please wear costumes and warm clothes. Registration required. Call or email to reserve a tour time soon. Spots fill quickly!

Members: \$5/person  
Non-Members: \$6/person

## Who Pooped in the Preserve? Animal Scat Program for Homeschool Families

Thursday, October 19th  
9:00-10:30am

Homeschool families are invited to be detectives and search for scat on a nature hike. After, identify who pooped in the preserve and make a scat creation of your very own. Children must be accompanied by an adult. *Registration is required by Monday, October 16th.*

Members: \$3/person or \$10/family  
Non-members: \$4/person or \$15/family



## Animals Entrusted in Our Care, An Evening with WOW

Tuesday, November 21st  
6:00-7:00pm

This is a great opportunity to learn about the important work of the local wildlife rehabilitation facility, Wildlife of Wisconsin (WOW). Meet a few patients and understand why they need help. Bring your cameras. *Please register by Friday, November 17th. Space is limited. Sponsored by Next Era Point Beach Nuclear Plant*

# SAVE *the* DATE

## Christmas Bird Count for Kids

Saturday, December 16th,  
9:00-11:30am



## Fall Migration Bird Walks

Fridays, August 25th  
September 29th  
8:15-9:30am

Join Woodland Dunes staff on a weekly bird hike during the fall migration season! Meet at the Nature Center and bring your binoculars. This is a weather dependent program. *Sponsored by Next Era Point Beach Nuclear Plant*



## Testimonial ~ From "Raising A Wild Child" program ...

*"It was about 'predators.' The kids fled from the one dressed as an eagle, but sure enough, the predator managed to catch a sibling in several instances! Jessica did an outstanding job teaching nature including along the trail out to a prairie - looking, listening, smelling, hearing, touching bugs, plants, snails, flowers. Even almost-88-year-old grandpa enjoyed the trek."*

~ Pete S.



To register for any of our programs, please contact Jess at [jessicaj@woodlanddunes.org](mailto:jessicaj@woodlanddunes.org) or call at 920-793-4007.



## Land Management

Land management is a never ending task, and this summer proved no differently than others. As part of our Phragmites control grant project, our interns were busy at the boat landings educating the public on this non-native species. One of our land management volunteers discovered our first population of garlic mustard on the preserve. Second year plants, which produce flowers and seeds, were removed and first year plants will be treated this fall when all other plants are dormant. With the help of interns and volunteers, we removed over three dumpster's worth of dame's rocket from along Columbus Street. We have also been working hard at the Manitowoc Lakefront Birding Area, working with the US Fish and Wildlife Service, Army Corps. of Engineers, City of Manitowoc, Stantec Consulting, Inc., volunteers, and others to remove invasives and plant native trees, shrubs, wildflowers, and grasses to benefit pollinator species and migratory birds.

Benches were installed at our bird park along Columbus Street, providing a place to sit and enjoy wildlife. These benches were a donation in memory of Jack Skidmore.

This fall, we will be planting over 850 wildflowers and native grasses as part of Bayer's Feed a Bee grant program, enhancing and establishing pollinator habitat on 4 acres of land surrounding the Nature Center. We will also be planting wildflower and grass seeds on approximately 14 acres of land through the Natural Resource Conservation Service's CSP and EQIP programs and on 10 acres of land in ATC power line right of ways through their pollinator habitat program. If any groups are interested in assisting in planting wildflowers, or with our Wednesday work days, please contact us at 920-793-4007 or jenniferp@woodlanddunes.org. Planting is scheduled to take place around September 15.

There is never a shortage of things to be done in the world of land management and we are continuing to work on some large projects. None of our work would be possible without members, donors, grants, and lots of volunteers. Thank you all for your help.

# INTERN REPORTS

## Summer 2017



Our summer interns from left to right: Anna, Jake, Julia, Mikayla

### ANNA Hall

My summer at Woodland Dunes has been a beautifully eye-opening experience. Having spent so much time on the medical side of science, it was so much fun to dive into the environmental side of things. I had many unforgettable first time experiences, including bird banding, bat surveys, and battling invasive species. My favorite part of my internship was definitely spending time with the kiddos in the many environmental education programs offered at the preserve.

As I prepare to go back to Silver Lake College to complete my Biology degree, I can look back on my time at Woodland Dunes and say with certainty that this has been a summer I will not soon forget. I am incredibly thankful to have been given this opportunity, and I will miss everyone dearly.

### JAKE Gostisha

Although short, my summer at Woodland Dunes was packed full of fun, learning, and awesome experiences. I'm studying Wildlife Biology at Lawrence University, so this internship has given me the opportunity to apply what I've learned. I've helped with everything from environmental education to banding birds. Out of all the projects involved in, developing the habitat at the Manitowoc Containment was the highlight of my work. We created tree and shrub islands for migrating birds, put up a purple martin house, and controlled invasive plant species. The most rewarding part of the summer - confirming that this is the field I want to pursue. It feels as though I did not work a single day while I was here. I guess this comes from the old saying, if you love what you do, you'll never work a day in your life.

### JULIA Adams

I have absolutely loved being the education intern here this summer. I've learned so much about birds and nature that I wouldn't have learned without this internship. I appreciate our environment so much more and want to continue expanding my knowledge about it. My favorite thing about this summer was getting the opportunity to work with children of all ages, and getting to see so many of them repeatedly throughout the summer. Being able to build relationships with these kids and getting them excited about nature has been so rewarding. I cannot express how thankful I am to have been part of the Woodland Dunes family. It has truly been an amazing experience.

### MIKAYLA Opichka

Hi, I'm currently a senior at Silver Lake College majoring in Early Childhood and Elementary Education with a minor in Natural Sciences. I will be student teaching this fall in the 6th and 2nd grades. This internship has been a perfect match for me as I have had countless opportunities educating children of varying ages about the environment and animals around them! My favorite highlights of the summer include the hands on science activities: surveying for mussels, fish, bats, birds, and pond dipping on the preserve. I am so grateful for these experiences, and for the new and fascinating knowledge that I have accumulated at Woodland Dunes. I will bring these ideas and activities into my future classrooms. These opportunities surely will help me spark a love for sciences within my prospective students!

## THANK YOU

### Memorials/Honorarials

In memory of  
Louina Reynolds  
Bill & Traci Hoeltke

In memory of  
Ron & Donna Feest  
Helen Bleser

In memory of  
Robert & Lois Bush  
Kathryn & Patrick Taddy

In memory of  
Jeff Knorr  
Lucy Zeldenrust  
Helen Bleser

In memory of  
Ronald Feest  
Michael & Jenene Garey  
Connie Hendries  
Jill Jonas  
Judy Goodchild

To commemorate  
the retirement of  
Honorable Jerome Fox  
Tom & Susan Rusboldt  
In honor of  
Merrie Star's birthday  
Natalie Star

### Donations

The Cawley Company  
Tim & Nancy Leigh –  
Dollars for Doers  
Karen Koebel –  
PayPal giving fund  
Robert Gahl  
Country Visions –  
Spot the Cause  
Campaign  
Crandon Public Library  
Darlene Waterstreet

Matthew Olker  
Prompt Printing Center  
Mike Reese  
The Welch Family  
Masters Gallery Foods, Inc.  
– Reward Your Purpose  
National Resources  
Foundation of Wisconsin  
Tracy Folz

### Grant Awards

The Pivot Rock Fund

### New Guarantors

Glen & Joan Hanson  
Schwartz Manufacturing Co.

### New Members

Janet Artz  
Meredith Dimagiba  
Dawn Nething  
Josh & Brooke Neuser  
Diane Leidig  
David & Sue Hilke  
Nicole Ogle  
Tania Nelson  
Laurie Lambries



# WOODLAND DUNES

## NATURE CENTER & PRESERVE

PO Box 486 | Two Rivers, WI 54241-0486

## WOODLAND DUNES NATURE CENTER

*Become a member or give a gift membership!*

### Headquarters & Nature Shop

Hwy 310 West of Two Rivers

#### Hours

Monday - Friday: 9 am - 4 pm  
Saturday: 9 am - 12 pm (April - October)

#### Contact

Phone: (920) 793-4007

Email: [nature@woodlanddunes.org](mailto:nature@woodlanddunes.org)

Website: [www.woodlanddunes.org](http://www.woodlanddunes.org)

Facebook: Look up Woodland Dunes in Two Rivers, WI and like our page!

#### Staff

<i>Executive Director</i>	Jim Knickelbine
<i>Assistant Director/ Education Coordinator</i>	Jess Johnsrud
<i>Communications &amp; Development Coordinator</i>	Nancy Nabak
<i>Land Management Coordinator</i>	Jennifer Klein
<i>Administrative Assistant</i>	Tina Kvitek

### Board of Directors

*Chairman*  
Tom Kocourek

*Vice Chairman*  
Bruce Robinson

*Treasurer*  
Troy Christiansen

*Secretary*  
Lyn Brouchoud

### Board Members

Rebecca Abler  
Helen Bleser  
Ed Brey

Robert Gahl  
Jon Henry

Bill Hoeltke  
Susan Knorr

Ellen Lewellen  
Mark McLaughlin

Dolly McNulty  
Charles Sontag  
John Woodcock  
Lucy Zeldenrust

Name \_\_\_\_\_  
Address \_\_\_\_\_  
City \_\_\_\_\_  
State \_\_\_\_\_ Zip \_\_\_\_\_  
Phone \_\_\_\_\_  
Email \_\_\_\_\_

- |                                |             |
|--------------------------------|-------------|
| <input type="checkbox"/> \$25  | Individual  |
| <input type="checkbox"/> \$35  | Family      |
| <input type="checkbox"/> \$50  | Patron      |
| <input type="checkbox"/> \$100 | Contributor |

#### Guarantors

- |                                  |             |
|----------------------------------|-------------|
| <input type="checkbox"/> \$250   | Conservator |
| <input type="checkbox"/> \$500   | Benefactor  |
| <input type="checkbox"/> \$1,000 | Steward     |
| <input type="checkbox"/> \$5,000 | Guardian    |

Please send this form and your tax-deductable membership to Woodland Dunes!