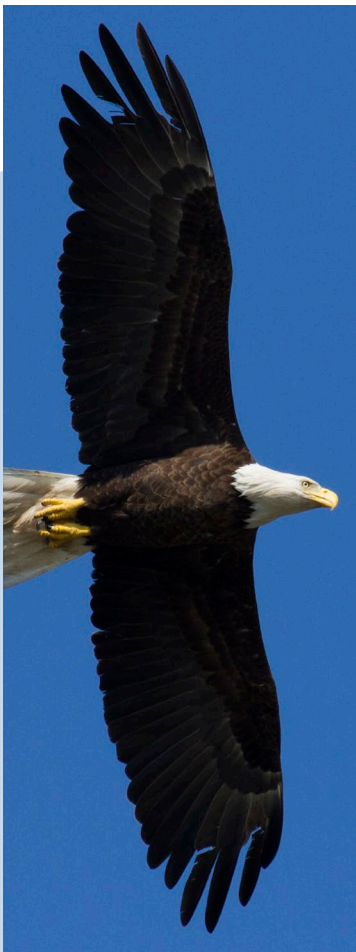


CONTENTS

- 2 Photo Contest
Planned Giving
Volunteer Spotlight
- 3 Dash at the Dunes
Greeting Cards
Candlelight Night
- 4 Lotsa Pasta
Thank You
- 5 Land Management
Butterfly Garden
- 6 Events
Summer Camp

Photography by Nancy Nabak unless otherwise noted.



FROM THE DIRECTOR

As we look forward to another busy spring season, we reflect on how the winter has flown by despite the challenging weather. We wish there had been better conditions for some events, but are grateful for the good weather during Candlelight Night and the many happy faces we saw enjoying the trails and snowbanks.

Now our attention turns to our Dash trail run, summer camps, tree planting, butterfly gardening, wetland restoration, and dreams of a building expansion. We are now in our 45th year as an organization, and we are just hitting our stride. I think it's hard for people to realize the scope of what goes on here because a lot of our effort is put into dozens of locations each year. Long ago it was decided that wildlife and education would be our priorities, and although this still remains the case, we realize that *people* need this place too, perhaps more than ever.

So we plunge into 2019, but as we do, we remind

ourselves of the intricate beauty of nature and our responsibility for its welfare - our obligation to teach others to appreciate it as well. To do that effectively, we will also do our best to make our place as enjoyable to visit as possible. It's always a challenge to work on so many fronts at once, but we've always found a way, and we're grateful that so many are willing to help. Working for and with

you, and seeing the results of those efforts, makes it all worthwhile.

Outside my window is a tiny red-breasted nuthatch, one of a pair of which have spent the winter. I think about how these little birds survive in a harsh world through their boundless energy

Celebrating
45 Years
of Conservation,
Education &
Outdoor Inspiration...

and adaptability, constantly searching for new ways to sustain themselves. Despite their small size, they are good role models, and their energy is something we will need to emulate in the coming year!

~ Jim Knickelbine, Executive Director



Phorests Are Phunky Photo Contest

Trees are amazing and curiously beautiful. Capture your best seasonal tree images and send us two that you would like to see published. Get your mind a thinkin', aperture settings ready, and cameras clicking!

Rules: Cropping & basic editing allowed. No removal or addition of objects, such as a moon in the composition. Photos must not have artist's name on the images to ensure fair and impartial judging.

Winter Contest: Dec. 2018 - March 2019. Deadline, Midnight March 31st.

Spring Contest: April - June 2019. Deadline: Midnight June 30th.

Summer Contest: July - August 2019. Deadline: Midnight August 31st.

Fall Contest: September - November 2019. Deadline: Midnight November 30th.

Send two high-resolution photos per season to: nancyn@woodlanddunes.org. Please mention photo contest in the subject line. Winners will be published in the Dunesletter, on our website and Facebook, and receive a complimentary year's membership to Woodland Dunes. Sponsored in part by the US Forest Service.

Planned Giving An Everlasting Gift



Are you passionately interested in our mission of habitat protection and nature-based education? Do you wish to see Woodland Dunes sustainable years from now? If so, you can make a gift that will support Woodland Dunes and its mission in perpetuity by contributing to our endowment fund.

Your generosity is an act of great vision. You will leave a legacy that ensures Woodland Dunes serves the community for many future generations. To contribute to the endowment fund, please contact Executive Director, Jim Knickelbine, at 920-793-4007 or email: nature@woodlanddunes.org.

VOLUNTEER SPOTLIGHT

2018 Tree Planters!

Thank you to all of the super star volunteers who helped unload the semi carrying thousands of trees, cut wire cages, removed invasive species, and planted native trees and shrubs over the last year. Your combined efforts meant over 2,000 trees in the ground and over 1,000 volunteer hours logged in the books! It takes a village to protect and preserve a forest and we couldn't have done it without all of you. Special thanks to team leaders Don DeBruyn, Ray Pollen, Bob Turnbull and Julie Thielbar.

More than 70 of you worked hard to accomplish our tree planting goals in 2018. Because coordinating everyone for a single photo was proving to be a challenge and we didn't want to exclude anyone, if you were a tree planting volunteer over the past year, we want you to insert your image here.

THANK YOU for your hard work, dedication, and sense of humor when the mosquitos were getting to all of us. Our canopy birds thank you. Our amphibians thank you. Our shade plants thank you. You make our world a better place.



5K DASH AT THE DUNES

5K Trail Run/Walk Fundraiser

Saturday,
April 27th
10:00am

Dash with us to help support our beautiful habitat and children's nature-based education programs!

Interesting Course! This course is a beautiful 5k trail run/walk that begins in the parking lot behind Aurora Medical Center, which leads to a forested section of the Ice Age Trail. Then, enter ridges and swales, cross small bridges and trek through a secluded meadow. The last 3/4 of a mile runs along Columbus Street, crosses Hawthorne Avenue, and ends at our Nature Center.

Enjoy the uniqueness we offer and walk or run for a bit of healthy fun!

This is a friendly race event, a naturally slower course because of the roots, surprise "trail trolls," and natural terrain. Give it a go! Walk or run with us and check out the spring melt, new buds reaching skyward, and a natural uniqueness that only this 5K can offer.

Note: Spring trail runs can be muddy, so be prepared to get speckled!

Great idea! Bring dry shoes for the ride home.

Finish Line Celebration! Snacks and drinks will be provided to all participants after the race with the award ceremony to follow. All children 12 and under will receive a wooden medallion for participation.

Sweet! A Bus Shuttle! We will shuttle Dashers back to Aurora Hospital between 11:15 a.m.-12:15 p.m.

Dogs are not allowed on this course. Strollers are not recommended.



To register early at a discounted rate, please go to: www.woodlanddunes.org/dash-at-the-dunes-5k-trail-run

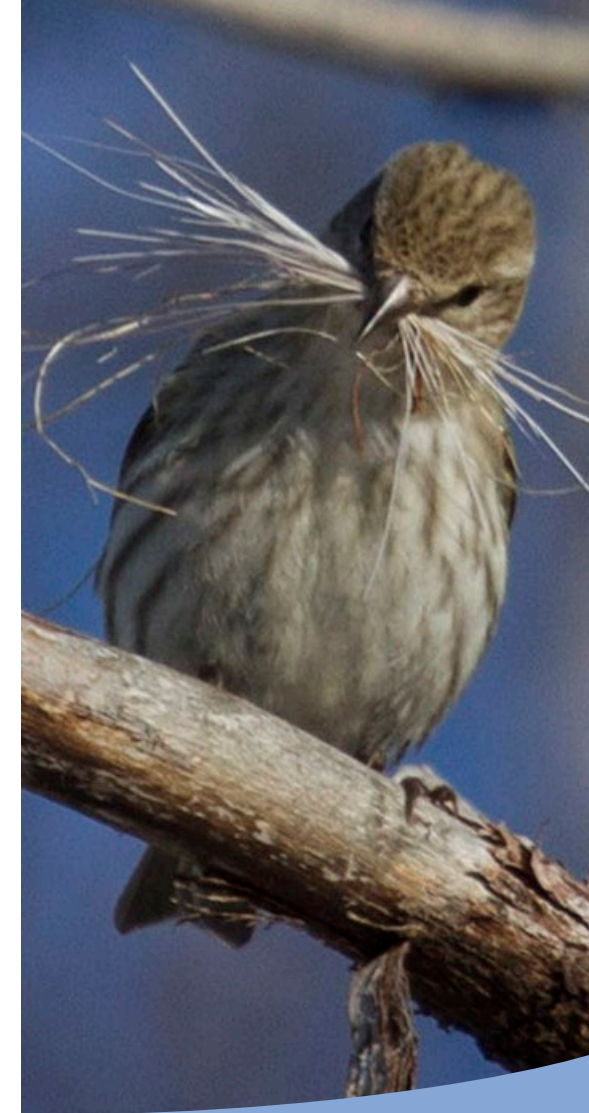
Let's dash and make a difference!

Stunning Local Greeting Cards in Gift Shop

Thanks to Cindy Lupin and Malley Printing Co., we have new greeting cards available in our gift shop. These stunning cards depict photos of local plant and wildlife by photographers: Tom & Betsy Kocourek, Cindy Lupin, Mike Pintok, Mike Reese, Charles Sontag, Joel Trick, and Julie Woodcock.

Thank you to these generous photographers who donated their images to benefit our Nature Center. A special thank you to Malley Printing for donating the printing of these attractive cards.

Please stop by and pick up these locally designed, reasonably priced cards to send to your friends and relatives (\$2 per large card, \$5 for packet of 4 small ones).



Candlelight Night

The fog and drizzle didn't keep the crowds away at our annual Candlelight Night event! Over 120 people of all ages enjoyed a wonderful, wintry evening at the Dunes.



Many used snowshoes and followed the luminaries along sections of Willow and Goldenrod Trails. Solar lights were also placed along Cattail Trail for

a unique evening effect and strolling. Astronomers Al and Ben were in the Sky Shed and the fire was warm and toasty for marshmallow roasting! Thank you to the amazing volunteers and sponsors who helped make this event possible! Sponsors: ATC, Thrivent, and Kohl's Action Team.

~Spaghetti Dinner~



Two Rivers Family Restaurant
3015 Tannery Rd.
Two Rivers, WI
March 18, 2019, 4-7:00 pm

Come twirl your fork & enjoy a warm, delicious meal while raising funds for the Nature Center!

Fee: \$8.00

Includes: All you can eat spaghetti & meat sauce, garlic bread, & beverage! Desserts available for purchase.

Good pasta & good friends make for a warm & yummy night out!

All proceeds support environmental education programs at Woodland Dunes and our beautiful habitat.

For more information, please call 920-793-4007



T H A N K Y O U

Memorials/Honorarials

In honor of Marilyn Sontag's 80th birthday
Chuck Sontag
Barry & Sandy Bast
Tom & Betsy Kocourek
John & Mary Wallace

In memory of Frank Turkat
James & Jean Alyea

In honor of Marty & Nancy Drury's 60th Wedding Anniversary
Carole Anhalt
Bob Rozoff

On behalf of Gaby Fields
Susan DeFranco

In memory of Terry Barner
Lee & Julie Stadler

Osprey Camera

Steven Lankton

Cattail Trail Boardwalk

Jim & Susan Knorr

Sugar Shack

Forward Endowment
Dominion Energy
Charitable Foundation

Education Programs

The Edward Jones
Office of Carla Liban
Harold Kallies
Charitable Trust

Giving Tuesday

Mike Reese
Darla Powell

Woodland Dunes Endowment Fund

Ruth Perry
Dolly McNulty

Corporate Match

U.S. Bank
Wisconsin Public
Service Foundation

In memory of Bernie Brouchoud
Patrick & Jean Willis
Bernie's family: Jeff, Jen, Juliana, Kandy, Jayson, Michelle, Kalie, Chris, Joe, Amber, Leila, Sophie, Annabelle, Lucy, Lyn
Jayson Brouchoud

In memory of Bob Malzahn
Nancy Hooper Horvath

In memory of Beverly Vareka
Geoffrey & Carla Liban
Lucy Zeldenrust
Robert & JoAnn Weinert
Helen Bleser
Modesta Olson
Chuck & Marilyn Sontag

In memory of Lenore Skubal
Lou Ann Gray

Dorothy Star Bee & Butterfly Garden

Chris & Kristin Scheuer
Mark & Joanie Scheuer
Master Gardeners of Manitowoc County — garden education programs

Grants

Neshotah Charitable
Foundation, Inc.
Matthew & Karen
Oswald Charitable Fund
Steven Lankton
Cellcom
NextEra Energy Point Beach

New Members

Leon Lodi
Tim & Karen Myers
Jeff & Ruth Harding
Amy Loomis
Robert & Deborah Bonk

Fund Drive Donors

Catherine Shallue
Janice Tetzlaff
Jim & Martha Rasmus

New Guarantors

Chris Jagodinsky & Gary Budysz
Thomas & Barbara Herrmann

In memory of Ron Stokes
Nancy Hooper Horvath

In memory of Paul Virnoche
Bill & Traci Hoeltke

In memory of Ann Suettinger
Helen Bleser
Family & Friends of
Ann Suettinger

In memory of Kenneth Brendemuehl
Doris A. Magyar

In memory of John Nickles
Thomas Rees

In memory of Dr. Robert & Lois Bush
Jeffrey & Julie Rathmanner

Donations

Amazon Smile
The Cawley Company
Suzanne Karrmann Trust
Ken Heldt
Two Rivers Fish Derby, Inc.
Kiwanis Club of Two Rivers
Tom & Betsy Kocourek
Bob & Peggy Turnbull
Cheryl Philipps
Millborn Seeds
Jayne Purchatzke
Two Rivers Business Association
Holschbach Excavating
Country Visions Cooperative
Cellcom — Givin' a Little
Back Program
Rosie Bugs
Richard & Tammy Mathewson
Malley Printing

If you are receiving this newsletter but not our monthly email updates and alerts, please contact Nancy at 920-793-4007. We want to make sure we are not falling into your spam filter. Thanks!

Land Management



We are working on some exciting changes in the Land Management program this spring. As we ramp up yet again to plant 3,000 native trees and shrubs to protect the swales from the effects of Emerald Ash Borer, we are adding programs to highlight the uniqueness and importance of the habitats which encompass our preserve. Our first program, Save the Swales, will be a week-long celebration in May of the unique swales of Woodland Dunes, which are so rare they are listed as Globally Significant.

We'll kick it off with the delivery of 3,000 trees and shrubs to the preserve on May 20. We're looking for lots of able-bodied volunteers to assist with unloading the semi-truck that day. We'll also be reaching out to the community to help organize several tree planting days throughout the week of May 20 -24th, including local scout groups and schools. Look for fun facts on our Facebook page as we highlight the beauty and wonder of the swales. Also, don't forget to check out and participate in our "Phorests are Phunky" Photo Contest (see article), which is part of our major tree planting project funded by the US Forest Service.

Help us welcome in spring and watch our preserve wake up after a long winter's nap. Stay tuned for more information. We will be highlighting more unique habitats within the preserve throughout the coming seasons.

To volunteer with tree planting or any other land management activities, please contact Jeni Klein at 920-793-4007 or jenniferp@woodlanddunes.org.



FROM THE Butterfly Garden

Despite some blustery, cold and soggy days, I am happy that winter provides time away from the physical work in the Butterfly & Bee Garden as I study publications and read news reports about matters that pertain to pollination and quality habitat. And boy, do I have a lot to learn! Here's an example.

As I was thinking ahead about potential summer projects, I was drawn to photos I'd taken of a mason bee hotel that I'd seen at a large university horticulture garden. It was really appealing to me, but a deeper study and a helpful conversation with fellow staff members made me realize it's not a good fit for our garden. I learned if not maintained properly, a structure like this can actually prove harmful to some of the very bees we're trying to help! Last summer we had bees galore, so conditions were right without needing one. This opportunity reminded me that observing nature, nurturing what it already provides, and facilitating education for visitors are all worthy goals that are manageable. Actually, it's what we do really well here at Woodland Dunes.

To that end, I look forward to working with wonderful volunteers again in spring, summer and fall as we continue our wonderful and worthy efforts: protecting monarchs, facilitating healthy growth of native pollinator plants, identifying the variety of butterflies, bees, and birds that spend time in our garden, and creating a place where humans and creatures join to celebrate our environment.

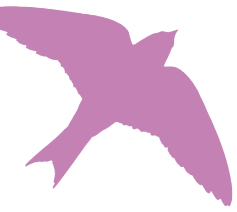
Watch for activities occurring throughout the warmer seasons, and please make the Dorothy Star Butterfly and Bee Garden a regular part of your frequent visits!

Wendy Lutzke
Environmental Educator/Butterfly Garden Coordinator

UPCOMING EVENTS

Maple Syrup Saturday

Saturday, March 9th
9:00-10:30am
Members: \$4; \$10 family
Non-members: \$5; \$15 family
 Experience the magic of the maple syrup season! Learn about the syrup making process and see how the tools have changed over time. Taste real maple syrup on popcorn, see the newly built syrup shack and discover why March is the sweetest time of year! Dress for the weather and be prepared to walk a short distance to the program site. Activities best suited for kids age 5 and up, but all ages welcome. Space is limited, registration required by March 4th. Sponsored by Next Era Point Beach Nuclear Plant.



How to Start a Purple Martin Colony

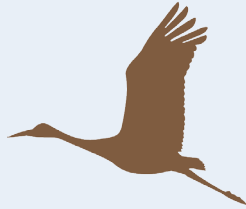
Wednesday, March 27th
6:00-7:00pm
 Learn about the Purple Martin, the largest member of the swallow family in North America, and tips and tricks to attract them to your home. Join Bob Shimek as he explains housing needs, location and how to check martin nests. Bob is a member of the Wisconsin Purple Martin Association, a Purple Martin Mentor for Manitowoc County and has a colony on his property. Registration appreciated by Monday, March 25th. Sponsored by Next Era Point Beach Nuclear Plant.

Paddling Through History: Shipwreck Interpretation for Paddlers

Tuesday, April 9th
6:00-7:00pm
 Discover Wisconsin's history beneath the waves with Wisconsin Historical Society's maritime archaeologist, Tamara Thomsen. Explore easily accessible, shallow water shipwrecks of Lake Michigan's scenic shoreline through underwater video, historic photographs, and archaeological discoveries. Hear stories of their tragic losses and learn how to visit, protect, and preserve these time-capsules of our maritime past. Registration appreciated by Friday, April 5th. Co hosted by Woodland Dunes Nature Center and the Friends of the Twin Rivers. Sponsored by Next Era Point Beach Nuclear Plant.

Midwest Annual Crane Count

Saturday, April 13th
5:30-7:30am
 Only a few Sandhill Cranes were left in Wisconsin in the 1930's, but thanks to protection efforts, their population now exceeds 10,000. Each year volunteers count courting sandhills in an organized effort in Manitowoc County. If you would like to help, or join a seasoned crane counter to learn the technique, contact Jim at the Nature Center (nature@woodlanddunes.org) for more information.



Timberdoodle Hike

Thursday, April 18th
7:30-8:30pm
Members: \$4; \$10 family
Non-members: \$5; \$15 family
 Search for the sky-dancing American Woodcock and witness its elaborate courtship displays during our guided hike. Space is limited, registration required by Tuesday, April 16th. Program is weather dependent. Sponsored by Next Era Point Beach Nuclear Plant.



Spring Migration Bird Walks

Fridays, May 3rd- June 7th
8:15-9:30am
 Attend our weekly, guided bird hike during the peak of the spring migration! Meet at the Nature Center and bring your binoculars. All walks are weather dependent and sponsored by Next Era Point Beach Nuclear Plant.



Spring Star Parties

Saturday, May 4th 9:00-10:30pm
Saturday, June 8th 9:30-10:30pm
 View night sky constellations, the moon and other celestial objects with astronomers Al and Ben using the big telescope in the Sky Shed. Bring a lawn chair and your own telescope if you wish. Weather and sky conditions permitting. If cloudy conditions, star parties will take place the following Saturday at the same time. Watch Facebook and the website for changes. Program takes place outside the Nature Center. Sponsored by Next Era Point Beach Nuclear Plant.



Bird Breakfast & Migration Celebration

Saturday, May 18th
8:00-11:00am
Adults \$6, Children \$5;
Kids under 4, free (includes breakfast)
 Let's celebrate spring and the return of many of our migratory songbirds together! Enjoy a ham and pancake breakfast, complete with guided bird & nature hikes. Kids games, activities, and bird banding demonstrations (weather permitting) will be on-going throughout the morning. This event is fun for everyone!



Ecology and Biodiversity of the Great Lakes Coastal Wetlands

Wednesday, May 29th
1:00-2:30pm
 Coastal wetlands are productive and diverse habitats at the transition between land and water. These habitats are important spawning and nursery habitats for many species of fish. Join Titus Seilheimer, Fisheries Specialist with the Wisconsin Sea Grant, as he provides an overview of the ecology of coastal wetlands followed by a look at wetland structure and species along Cattail Trail. Registration appreciated by Friday, May 24th. Sponsored by Next Era Point Beach Nuclear Plant.



Be a Nature Princess... At Any Age!

Saturday, June 1st
9:00am-Noon
 This program is inspired by the children's book, "Do Princesses Wear Hiking Boots?" and is destined to be a royally good time! Daughters, grandmothers, aunts, nieces and other royal descendants are invited to share in the fun of making nature crowns, using dip nets to discover what lives in the water and hiking along the Ice Age Trail. Princess attire that can get dirty and rain boots are highly encouraged! Space is limited to 50 princesses. Registration required by Tuesday, May 28th. This program is in partnership with Woodland Dunes and the Ice Age Trail Alliance.

Summer Camp Registration is Open!

Summer fun is at Woodland Dunes! Nature camps help kids foster a deeper connection to nature through exploration, hands-on activities and play! Register online or stop in at the Nature Center. Camps fill quickly, register soon! Full camp descriptions and information can be found online at <https://www.woodlanddunes.org/summer-camps/> or contact Jess at: jessicaj@woodlanddunes.org



Little Wings Summer Camp

4-6yrs old, not completed kindergarten
Monday, June 24th – Friday, June 28th
 9:00am-Noon

Bees, Blossoms and Bugs Summer Camp

4-7 yrs
Wednesday, July 24th
 1:00-3:00pm



Nature Grossology Summer Camp

7-11 yrs
Friday, July 12th
 12:30-3:00pm

Nature Princess Summer Camp

4-6 yrs
Thursday, August 1st
 9:00-11:30am

Pond Pals Summer Camp

6-10 yrs
Thursday, July 18th
 12:30-3:00pm

Star Gazers Family Summer Camp

8 yrs and up
Saturday, August 10th



To register for any of our programs, please contact Jess at jessicaj@woodlanddunes.org or call at 920-793-4007.



WOODLAND DUNES

NATURE CENTER & PRESERVE

PO Box 486 | Two Rivers, WI 54241-0486

WOODLAND DUNES NATURE CENTER

Become a member or give a gift membership!

Headquarters & Nature Shop

Hwy 310 West of Two Rivers

Hours

Monday - Friday: 9 am - 4 pm
Saturday: 9 am - 12 pm (April - October)

Contact

Phone: (920) 793-4007
Email: nature@woodlanddunes.org
Website: www.woodlanddunes.org
Facebook: Look up Woodland Dunes in Two Rivers, WI and like our page!

Staff

Executive Director Jim Knickelbine
*Assistant Director/
Education Coordinator* Jess Johnsrud
*Communications &
Development Coordinator* Nancy Nabak
*Land Management
Coordinator/ Tech Support* Jennifer Klein
Administrative Assistant Tina Kvitsek
*Environmental Educator/
Butterfly Garden Coordinator* Wendy Lutzke

Board of Directors

Chairman
Tom Kocourek

Vice Chairman
Bruce Robinson

Treasurer
Troy Christiansen

Secretary
Lyn Brouchoud

Board Members

Rebecca Ablar
Helen Bleser
Ed Brey
Sue Crowley
Robert Gahl
Jon Henry
Susan Knorr
Ellen Lewellen
Mark McLaughlin
Dolly McNulty
Charles Sontag
Lucy Zeldenrust

Name _____
Address _____
City _____
State _____ Zip _____
Phone _____
Email _____

- \$25 Individual
 \$35 Family
 \$50 Patron
 \$100 Contributor

- \$250 Conservator
 \$500 Benefactor
 \$1,000 Steward
 \$5,000 Guardian
- I would like to contribute to the endowment fund. Please contact me.

Please send this form and your tax-deductable membership to Woodland Dunes!