

CONTENTS

- 2 WAV at the Dunes
Planned Giving
Dash at the Dunes
Prairie-Pollinator Fest
- 3 Volunteer Spotlight
Photo Contest
- 4 Garden Faire
Chimney Swifts
- 5 Thank You
Land Management
- 6 Events

Photography by Nancy Nabak unless otherwise noted.



FROM THE DIRECTOR

What a precious thing is summer. After months of preparation, we are ready for a very busy season ahead. Like last year, we will plant thousands of trees in the preserve and welcome thousands of visitors. We'll welcome several interns to our staff, work with a number of other organizations on projects, teach hundreds of children, count thousands of birds, and plan for an exciting building expansion. There will be no lack of projects, and we couldn't do them without your help. We're grateful for all of the volunteers who work with us in any way to help make these things possible.

Even though there is so much to do, and so many new things happening, we remind ourselves of our mission, which remains consistent since our founding 45 years ago. We are charged with the care of a remarkable and ecologically important place, one of just a few of its kind. Every bird, flower, salamander - all the plants and animals which live or pass through here are important. The populations of many of them are tenuous at best, and we are responsible for their existence at least in part. At the same time, there remains a need to connect people with the land through education

and experience. Not only will people enjoy their experiences in nature more, we hope to continue to foster a greater empathy for wildlife and promote a desire to care for the natural world. In the process, we are creating a facility that will attract even more visitors, helping Two Rivers and Manitowoc to prosper.

So we strive for new and different ways to engage with people, but at the same time keep an eye on what's really important, what caused us to be founded. It's always a challenge and a bit of a tightrope walk, but it's critical that we build

“We're grateful for all of the volunteers who work with us.”

on our mission and what we have done and not drift away from it. If anything, you'll see as you read this newsletter that there are many ways to keep Woodland Dunes a haven

for wildlife and the community both - and a vibrant place for learning. You'll also see some remarkable changes here in the next few months with more opportunities than ever to enjoy the outdoors.

Here's to another exciting summer season- we look forward to seeing you soon.

~ Jim Knickelbine, Executive Director

Osprey

Our Osprey are back and making a family! Skye and Talon (submitted by Dan Padgett in naming contest) are on the platform and as of today, have two eggs on the nest. Be watching our Ospreycam via our website, "Preserve" tab, to watch the progress in real time!





WAV at the Dunes

Have you heard of Water Action Volunteers (WAV)? Well, here at the Dunes we have a group of volunteers and staff who participate in this important citizen monitoring project. The program, supported by the Wisconsin DNR, is a division of the UW-Extension, in partnership with local organizations to understand watersheds and water quality.

So what do we monitor? The WAV program's baseline monitoring includes six parameters or stream characteristics: water/air temperature, transparency, dissolved oxygen, biotic index, habitat, and stream flow. Once a month each volunteer visits a specific site within the East Twin or West Twin watershed to collect data that will help assess the health of the stream. That data is added to a database that can be viewed online and studied for changes over time.

Local coordinators provide equipment and train volunteers by demonstrating the science that leads to accurate and reliable data collection. We currently have six sites that will be monitored over the next several months. It only takes about an hour once a month to collect data at a particular site, and it's a lot of fun to grow in knowledge and get to know the streams. If you have interest in participating as a WAV volunteer, please contact Wendy at wendyl@woodlanddunes.org.

Planned Giving
An Everlasting
Gift



A Forever Wish Come True

Is it your desire to see Woodland Dunes positively making changes in our community years from now? If so, you can make a gift that will support Woodland Dunes and its mission in perpetuity by contributing to our endowment fund.

Your generosity is a great act of selfless vision. You will leave a legacy that ensures Woodland Dunes serves the environmental needs of our community for now and future generations. To contribute to the endowment fund, please contact Executive Director, Jim Knickelbine, at 920-793-4007 or email: nature@woodlanddunes.org.



250 Strong!

It has been a soggy spring, but 250 dedicated runners and walkers dashed and splashed their way to our finish line at the 9th annual Dash At the Dunes on Saturday, April 27th. Even those who got tripped up by a "trail troll" came across in good spirits. With their support and the support of our sponsors, we raised over \$10,000 for nature-based education and our unique Preserve.

Congratulations to our Overall Winners:

Jennifer Chardoir of Green Bay (21:43)
Robert Finke of Minneapolis, MN (18:57)

Thank you to our sponsors:

BayCare Orthopedics & Sports Medicine
Shoreline Credit Union | KI
Fox Communities Credit Union
Crossroads Community Church
Seeds N Beans | Lakeside Foods
Starfish Graphics



Bee watching for educational activities & programs during this celebratory week. Get to know the value of our native plants & pollinators and why we want both! See August 7th program for starters!



Dr. Jon and Annette Henry

How long have you volunteered at Woodland Dunes and why did you decide to get involved?

Jon: I've been on the board for about 8 years. More recently, I've been helping with Dash At the Dunes and other fundraising projects. Initially, I got involved with the Dunes as part of a "good neighbor" relationship, but I then realized the genuine commitment of the Woodland Dunes leadership and staff to our local nature and community. It's a win-win relationship for me. Annette: I've been helping for 4 years with educational programs. I got involved with the Dunes because of my love of nature and outdoor activities, desire to "give back" to the community, and love for youth education. I'm inspired and motivated by Jessica to "get involved."



What do you most enjoy about being involved with Woodland Dunes?

Jon: The positive community impact, pro-active nature preservation, great collegiality amongst the Woodland Dunes leadership team, and great energy and enthusiasm for what they do. Annette: Interacting with Woodland Dunes staff and other volunteers, especially working along side Jessica.

What are some of your favorite pastimes or hobbies?

Jon: Woodworking, running, cycling, cross-country skiing, and hobby farming
Annette: Home improvement activities, coaching, and cycling

Words of wisdom for other volunteers?

Jon: Woodland Dunes has volunteer opportunities for anyone with nature-related interests. Annette: Your reward is seeing the positive impact Woodland Dunes has on our lakeshore community and beyond.

Anything else you'd like to add?

Jon: It's a privilege to serve on Woodland Dunes Board of Directors.
Annette: Woodland Dunes has a big impact on youth-oriented, nature-based education.



Phorests Are Phunky Photo Contest

Trees rock! Capture your best seasonal tree images and send us two that you would like to see published. Get your mind a thinkin', aperture settings ready, and cameras clicking!

Rules: Cropping & basic editing allowed. No removal or addition of objects, such as a moon in the composition. Photos must not have artist's name on the images to ensure fair and impartial judging.

Dec-March Contest Winner:

Cindy Braun – Congratulations!
See photo insert.

April-June, Spring Contest:

Deadline: Midnight June 30

July-August, Summer Contest:

Deadline: Midnight August 30

September – November, Fall Contest:

Deadline: Midnight November 30th

Send two high-resolution photos per season to: nancyn@woodlanddunes.org. Please mention photo contest in the subject line.

Winners will be published in the Dunesletter, on our website and Facebook, and receive a complimentary year's membership to Woodland Dunes.

Sponsored in part by the US Forest Service.

Celebrating
45 Years
of Conservation,
Education &
Outdoor
Inspiration...

Wanted: Glass beads with larger holes (to fit on thicker wire) that will be used to make garden art. Please, no seed-based beads. If you have left over craft supplies or would like to donate beads to our "Bling Up the Gardens" program, please give us a call at 920-793-4007 or email Jess at jessicaj@woodlanddunes.org by June 18 at the latest. Thank you!



Chimney Swifts: Know Their Sound While Nesting

Chimney Swifts are back and it's time to learn their sounds during nesting season. This unique bird is on the decline, so if you hear an unfamiliar sound in your chimney, pay close attention- you may be winning the lottery! Swifts will not harm your chimney, and their sounds can give you great entertainment and pleasure.

Chimney Swifts create a variety of sounds when nesting. There is a "whooshing" of wings as they come and go from the chimney. They utter a gentle "chirping" as they socialize with one another during nest building and at night. The most audible sounds are those of the young, which includes a very loud, high-pitched "yippering" as they beg for food from the parents, and a mechanical, hissing alarm call made when disturbed or frightened.

Once the sound of the young becomes noticeable, they are usually only 10 days or so from leaving the nest. The homeowners' tolerance during this critical period of the swifts' development is very important. Keeping the damper closed and packing the fireplace with insulation can dampen the sound, if you wish. (Although, we at Woodland Dunes LOVE hearing our baby swifts food begging and chattering!)

For nesting, Chimney Swifts only need one square foot of unused column such as your chimney during the summer when not being used.

History: Chimney Swifts historically nested and roosted in hollow trees. As American pioneers moved westward across the continent, they cleared forests and removed the swifts' natural habitat. The birds that Audubon called American Swifts became known as Chimney Swifts as they readily adapted to masonry chimneys erected by those same pioneers. Over the decades, the range of swifts expanded with this new, man-made habitat. However, environmental changes, including fewer chimneys, are now challenging this species.

For more information, please go to the statewide Chimney Swift Working Group website: <https://www.wiswifts.org>. Please join us for a night of swift monitoring this August – see activities calendar in this issue.

T H A N K Y O U

Memorials/Honorariums

In memory of Lloyd Dickensheid
Helen Bleser

In honor of Helen Bleser's birthday
Bonnie Timm

In memory of Bernie Brouchoud
Carol Martin

In memory of Beverly Vareka
Carol Martin

In memory of David Schaap
Janet & Jeffrey Kohn

In memory of Mrs. Margaret Holmes
Mona Moen

In memory of Esther Schaaf
Elizabeth Coyle

In memory of Patricia Fortune
Aaron Fortune

In memory of Dick Ertman
Helen Bleser

Donations

Tom & Betsy Kocourek

Bruce Robinson

Country Visions Cooperative

Rick & Tammy Mathewson

The Cawley Company

Amazon Smile Foundation

Lee & Cathy Hansen
– Seeds 'n' Beans

Rosie Bugs

Hinz Family Fund

Steven Lankton

Anonymous

Dave Ozarowicz

It's Race Time

Prigge Real Estate, LLC,
owned by Ed & Joan Prigge

Kohls

Facebook Donations

Anonymous

New Building Addition

Peter & Suzanne Weber
Fred & Charlotte Alyea

Education Programs

Nick & Jessica Wegener

Woodland Dunes Endowment Fund

Philip & Margaret Rees
Dolly McNulty

Grants

West Foundation
NextEra Point Beach
Tom & Virginia Bare Charitable Fund
of Lakeshore Community Foundation
Hintz Family Fund
Natural Resources Foundation
of Wisconsin Quiet Trails Fund
Fred & Charlotte Alyea – Internship

Aurora Health Care Team Members Pledges

Mr. & Mrs. Ronald Beaulieu

New Guarantors

Mary Jeanne Censky
Bill & Patty Lou Pohlmann

New Members

Holly Suszek
Amanda Maresh
Bonnie Timm
Marvin Moore
Robin Sprang
Jacob Lueptow
Rita Schilder
Rebecca Jabs
Elizabeth Hengst
Nick & Jessica Wegener
Diane Homeyer

Fund Drive Donors

Tim Tetzlaff

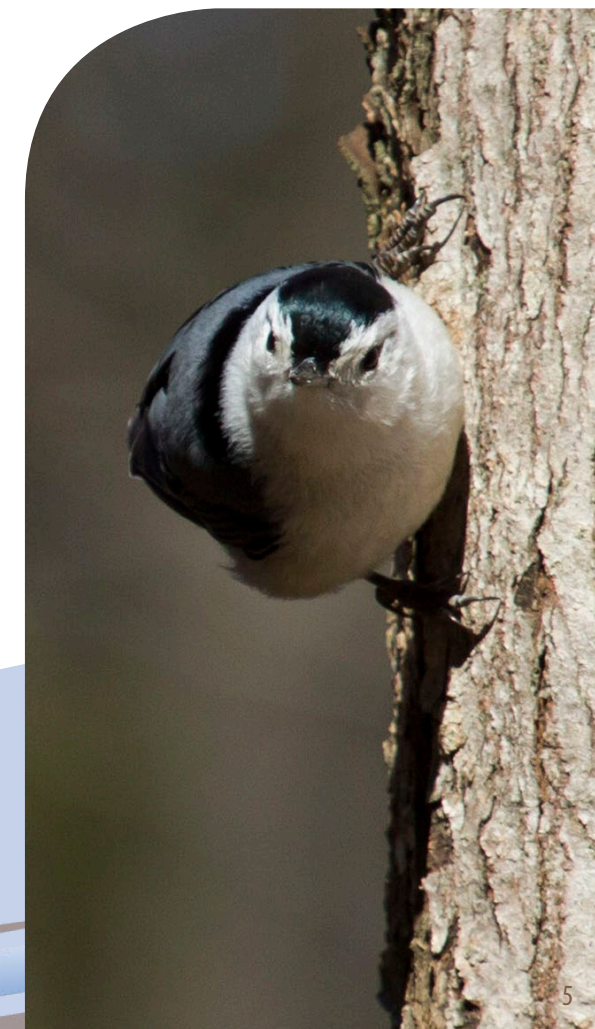
Land Management

Land management is revving up for a busy summer. We are diligently protecting our swales from the devastating effects of Emerald Ash Borer. After reviewing our budget from our current US Forest Service grant and Fred Alyea donation, we were able to hire three full-time interns and one half-time summer intern specifically for our swale coastal wetland restoration project. This will greatly increase our capacity to plant 3,000 trees and shrubs this summer. We are fortunate for this funding and the increased staffing. While it may appear from the outside that land management is just grunt work and manual labor (cutting invasive species down and planting native species), it is so much more than that.

The big picture of land management is leaving as little impact as possible on the rare ecosystem we are charged with protecting. Sometimes this means getting our hands dirty and helping rid the system of unwanted plants we as humans allowed in, sometimes this means planting a variety of native trees and shrubs to protect the forest from devastation due to the loss of one tree species which dominates the canopy. Sometimes, this also means keeping our human trace to narrow trails and leaving the majority of the preserve untouched by mankind.

As we evolve as an organization, we are able to successfully manage our land and expand our restoration efforts. At the same time, we are starting to look deeper into these hidden gems: their identification, functions, and benefits. Through learning more each day about the unique plant and animal communities we are sworn to protect, we are better able to serve them in a manner that truly benefits them, not just us. In that spirit, we started our "Save the Swales" week. This is a week in May dedicated to the coastal wetland restoration project and the physical labor of restoring our swales, while learning about their importance at the same time. Other future programs to look for include: Prairie Fest, Rockin' the Forest, and Winter Wonder Land. I look forward to continuing on our learning journey with you.

– Jennifer Klein, Land Management Coordinator



**Manitowoc's
~Garden Faire~
Extraordinaire**
Saturday ~ June 8th
9-3 Washington Park, Manitowoc

FLOWERS ~ HERBS ~ HANGING BASKETS ~ VEGGIE STARTS

PROCEEDS FROM THIS EVENT WILL BENEFIT
WOODLAND DUNES NATURE CENTER

GARDEN ART ~ ARTISAN CRAFTS ~ LOCAL FOODS ~ RAFFLES

~ New This Year ~
Off Site Parking With Shuttle Transport
Visit manitowocsgardenfaire.com or
our facebook page for more details

Brat Fry & Bake Sale by "The Haven"
[Manitowoc Co. Men's Homeless Shelter]

Find us on Facebook 2019

MANITOWOC'S GARDEN FAIRE EXTRAORDINAIRE

1115 Washington Street INFO- 920.717.1177

Garden Faire Extraordinaire!

Attention Gardeners and Flower lovers!

Don't miss Manitowoc's Garden Faire Extraordinaire

Saturday, June 8th!

9-3:00 Washington Park, Manitowoc.

Flowers, herbs, hanging baskets. . . you name it!
Add to that local foods and neat raffles to benefit
Woodland Dunes Nature Center. What a great day!

Spruce up your garden and support
Woodland Dunes at the same time!

Questions: Call 920-717-1177.

UPCOMING EVENTS

Summer Star Parties

Saturday, June 8th 9:30-10:30pm
 Saturday, July 13th 9:30-10:30pm
 Saturday, August 10th 9:00-10:30pm

Join astronomers Al and Ben while observing night sky constellations, the moon and other celestial objects through the big telescope in the Sky Shed. Bring a lawn chair and your own telescope or binoculars if you wish. Weather and sky conditions permitting. Program takes place outside the Nature Center. Sponsored by Next Era Point Beach Nuclear Plant.



Volunteer Appreciation Picnic

Tuesday, June 11th
 11:30am

Let's picnic! Volunteers are invited to a picnic lunch made by the staff. Sit back, relax and let the staff thank you for everything you make possible at Woodland Dunes. All volunteers invited. Then stick around for a wonderful program with Justin Kroening from Stone Silo Prairie Gardens at 1:00pm. Please RSVP by Friday, June 7th. Held at the Nature Center.



Why Natives?

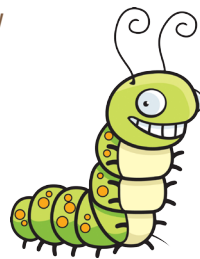
Tuesday, June 11th
 1:00-2:00pm

Justin Kroening, owner of Stone Silo Prairie Gardens, will discuss the advantages of using native plant material in our landscape. The presentation will highlight native perennials that provide food and shelter for wildlife, and nectar for pollinators. Registration appreciated by Friday, June 7th. Sponsored by Next Era Point Beach Nuclear Plant.



Raising a Wild Child Preschool Program

Thursdays June 13th,
 July 11th, August 8th
 9:00-10:30am
 Members: \$2/child
 Non-members: \$3/child



Experience the wonders of nature with your 2-5 year old through nature hikes, play, and guided activities. Help your child notice the natural world and ignite their curiosity! Older siblings are welcome during the summer months. Registration required by the Monday before each program. Children must be accompanied by an adult. Dress for the weather. Sponsored by the Edward Jones office of Carla Liban.

Firefly Night

Saturday, June 15th
 8:45-9:45pm
 Members: \$4; \$10 family
 Non-members: \$5; \$15 family

You're invited to an evening "light show" at Woodland Dunes! A night-walk to look for fireflies will follow a short, indoor program about these amazing insects. The walk is one mile walk round trip, taking us to the firefly field and back. Recommended for children ages seven and older. Registration required by Wednesday, June 12th. Sponsored by Next Era Point Beach Nuclear Plant.



Celebrate International Mud Day

Thursday, June 20th
 4:00-5:30pm
 Members: \$2/child
 Non-members: \$3/child

Celebrate International Mud Day by exploring soil and making mud pies! Activities best suited for ages 3 to 7, but all ages welcome. Be prepared to get muddy. An extra change of clothes and plastic bags are highly recommended. In the event of poor weather, there will be an indoor activity available. Registration appreciated by Monday, June 17th. Sponsored by the Edward Jones office of Carla Liban.



Yoga Hikes at the Dunes

Saturday Yoga Hike,
 June 22nd, 9:30-11:00am
 Full Moon Yoga Hike,
 Thursday, July 18th, 8:00-9:30pm
 \$15/single or \$25/couple
 (if registered & paid 3 days prior to class)
 \$20/single or \$30 couple walk-in
 (if space available)

Join certified yoga instructor, Jennifer Jelenic, for nature inspired yoga trail hikes through



Woodland Dunes. Enjoy a quiet, meditative walk through the trails, pausing periodically to practice sequenced, standing yoga poses designed around the beauty of the natural space. No experience necessary. Wear clothes appropriate for the weather and movement. Limit 20. All ages welcome. Yoga and guided meditation inside the nature center in case of inclement weather.

West Twin River Paddle

Saturday, June 29th
 9:00-11:30am

Join the Friends of the Twin Rivers for a leisurely 4.3 mile paddle on the West Twin River from Shoto to Veteran's Park. Bring your own non-motorized watercraft or reserve a kayak when you register (limited availability). Registration required by June 24th by calling Jenn at 920-627-1799 or email jenn@lnrp.org. Sponsored by Friends of the Twin Rivers Watershed, Twin Rivers Water Trail, Lakeshore Natural Resource Partnership and Woodland Dunes.



Fun After the Fourth

Friday, July 5th

Visit the Nature Center to participate in one of the programs listed below, explore the trails, and relax with friends and family. All ages welcome, no need to register! Bring a picnic lunch and stay all day!



Guided Bird Hikes

8:15-9:30am
 10:30-11:30am

Enjoy a guided bird hike and bring your binoculars if you have them. This is a weather dependent program.

Butterfly Seed Paper Make and Take

1:00-3:00pm

Stop in anytime between 1:00-3:00pm to learn how to make seed paper in the shape of a butterfly. These lovely creations can be planted to attract butterflies, bees and other pollinators. If inclement weather, this program will be indoors.



Nature Time Tuesdays

Tuesdays, July 9th - August 6th
 1:30-3:00pm

Families are invited to drop in anytime between 1:30-3:00 and participate in a nature-themed activity as a family. Takes place at the Nature Center rain or shine. Sponsored by the Edward Jones office of Carla Liban.



Bling-Up the Gardens

Wednesday, July 10th
 1:00-2:30pm

Join Heather Nelson from the Rahr-West Art Museum to create some beaded bling. Leave your mark in our gardens for others to enjoy and take home a miniature version for your flower pot. All supplies provided. Space is limited to 40 participants. Registration required by July 5th. Program in partnership with the Rahr-West Art Museum.



Owl Fest

Saturday, July 27th
 9:00am-Noon

Members:
 \$5/person or \$15/family
 Non-members:
 \$8/person or \$20/family

Join us for an exciting morning learning about Wisconsin owls! Enjoy kids' activities, guided nature walks, an owl-hooting contest for children and owl art with the Rahr-West Art Museum. Meet live owls and raptors during presentations by Wildlife of Wisconsin. This event is great for families, but all ages are welcome. Takes place at the Nature Center. Sponsored by ATC.



Insects and Other Creep-Crawlies: What's Bugging You?

Wednesday, August 7th
 10:00am-Noon

Insects share the earth with us. More than 85% of all species of animals are insects, and thousands of them live their lives all around us. What are insects and why should we care?



Join the BugLady, Kate Redmond, to learn about the variety, natural history, survival strategies, ecological importance, and beauty of these misunderstood creatures. Kate is an Environmental Educator and has written more than 530 essays for her Bug o' the Week series for the Cedarburg Bog. Weather permitting, we will take a short walk to look for insects. Registration appreciated by Monday, August 5th. Sponsored by Next Era Point Beach Nuclear Plant.

Swift Monitoring for Families

Tuesday, August 13th
 7:30pm-8:15pm

Families are invited to join staff and volunteers to help count Chimney Swifts. Join the fun and excitement as these birds put on an aerial acrobatic show before entering an old chimney in Two Rivers. Bring binoculars and camping chairs. Registration required by Monday, August 12th. Program is weather dependent.





WOODLAND DUNES

NATURE CENTER & PRESERVE

PO Box 486 | Two Rivers, WI 54241-0486

WOODLAND DUNES NATURE CENTER

Become a member or give a gift membership!

Headquarters & Nature Shop

Hwy 310 West of Two Rivers

Hours

Monday - Friday: 9 am - 4 pm
Saturday: 9 am - 12 pm (April - October)

Contact

Phone: (920) 793-4007
Email: nature@woodlanddunes.org
Website: www.woodlanddunes.org
Facebook: Look up Woodland Dunes in Two Rivers, WI and like our page!

Staff

Executive Director Jim Knickelbine
*Assistant Director/
Education Coordinator* Jess Johnsrud
*Communications &
Development Coordinator* Nancy Nabak
*Land Management
Coordinator/ Tech Support* Jennifer Klein
Administrative Assistant Tina Kvitek
*Environmental Educator/
Butterfly Garden Coordinator* Wendy Lutzke

Board of Directors

Chairman
Tom Kocourek

Vice Chairman
Bruce Robinson

Treasurer
Troy Christiansen

Secretary
Lyn Brouchoud

Board Members

Rebecca Ablar
Helen Bleser
Ed Brey
Sue Crowley
Robert Gahl
Jon Henry
Susan Knorr
Ellen Lewellen
Mark McLaughlin
Dolly McNulty
Charles Sontag
Lucy Zeldenrust

Name _____
Address _____
City _____
State _____ Zip _____
Phone _____
Email _____

- \$25 Individual
 \$35 Family
 \$50 Patron
 \$100 Contributor

- \$250 Conservator
 \$500 Benefactor
 \$1,000 Steward
 \$5,000 Guardian
- I would like to contribute to the endowment fund. Please contact me.

Please send this form and your tax-deductable membership to Woodland Dunes!